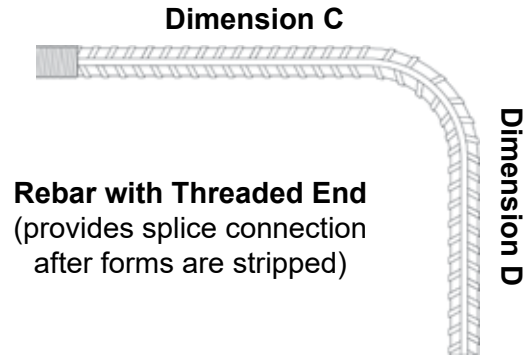
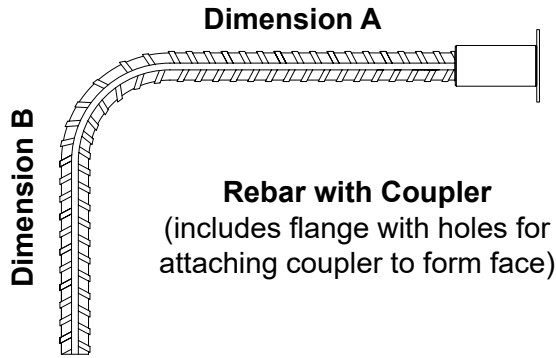


Form Saver

Eliminate the hazards of protruding rebar and costs of form face replacement



Provide the following information for each Form Saver assembly:

1. Identify the rebar sizes and number of units from project plans.
2. Provide Dimension A for each configuration.
3. Provide Dimension B for each configuration and indicate bend (if any) in degrees.

ASTM A-615 Grade 60 Rebar Data						
Rebar Size	Weight (lbs/lf)	Nominal Diameter (in)	Cross Section Area (sq in)	Minimum Load (lbs)		
				Py	1.25 Py	1.50 Pult
#4	0.668	0.500	0.200	12,000	15,000	18,000
#5	1.043	0.625	0.310	18,600	23,250	27,900
#6	1.502	0.750	0.440	26,400	33,000	39,600
#7	2.044	0.875	0.600	36,000	45,000	54,000
#8	2.670	1.000	0.790	47,400	59,250	71,100
#9	3.400	1.128	1.000	60,000	75,000	90,000

4. Provide Dimension C for each configuration, NC thread is standard.

ASTM A-615 Grade 60 Coupler Data						
Coupler Size	Thread Size (in / NC)	Coupler Weight (lbs)	Coupler Length (in)	Coupler (in)	Flange (in x in)	Minimum Load Pult (lbs)
#4	1/2"-13NC	0.280	1.750"	.875"	2x2	19,800
#5	5/8"-11NC	0.350	2.000"	1.000"	2x2	30,690
#6	3/4"-10NC	0.480	2.125"	1.125"	2x2	43,560
#7	7/8"-9NC	0.700	2.500"	1.250"	2x2	59,400
#8	1"-8NC	1.200	3.000"	1.500"	2x2	78,210
#9	1-1/8"-7NC	2.000	3.500"	1.750"	3x3	99,000

5. Provide Dimension D for each configuration and indicate bend (if any) in degrees.

SureBuilt
Concrete Forms & Accessories

840 South 25th Ave
Bellwood, IL 60104
708-493-9569
www.surebuilt-usa.com

