

# ProBasket

## Beveled dowel assembly for efficient load transfer in concrete floor and pavement joints

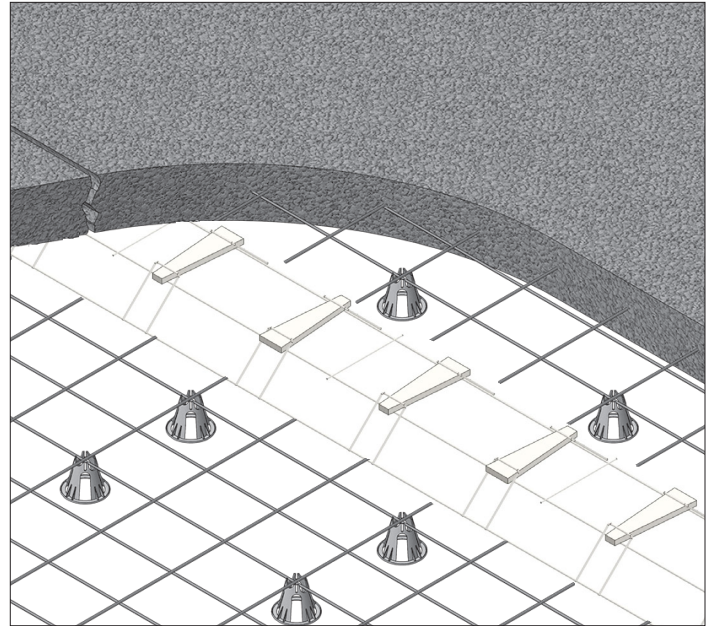
The ProBasket provides joint stability, reliable load transfer and smooth slab-to-slab transition, in a single cost-effective assembly.

A properly installed ProBasket minimizes joint spalling.

The diamond-shaped steel plate allows axial and lateral movement, provides bearing capacity, and prevents slab interlock and cracking, assuring a high quality concrete slab.

A properly installed ProBasket is designed for joints up to 0.20" wide and is suitable for all types of ground level concrete slabs, such as jointed floors, flatwork and pavement.

An ProBasket conforms to ACI 302.1R Guide for Concrete Floor and Slab Construction and ACI 360 Design of Slabs-on-Ground.



*The labor-saving ProBasket is placed as a single unit at every planned concrete joint, along with typical chairs and reinforcement.*

ProBasket				
Part No.	Description (height x length)	Slab	Plate Size*	Spacing**
SBPB638S18	ProBasket 3" x 12'	6"	3/8" x 2" x 12"	18" OC
SBPB738S24	ProBasket 3-1/2" x 12'	7"	3/8" x 2" x 12"	24" OC
SBPB712S18	ProBasket 3-1/2" x 12'	7"	1/2" x 2-1/2" x 12"	18" OC
SBPB812S24	ProBasket 4" x 12'	8"	1/2" x 2-1/2" x 12"	24" OC
SBPB934S18	ProBasket 4-1/2" x 12'	9"	3/4" x 2-1/2" x 12"	18" OC
SBPB1034S24	ProBasket 5" x 12'	10"	3/4" x 2-1/2" x 12"	24" OC
SBEDBDA	Debond - 5 Gal Pail	Coats tapered dowel for movement within slab		

\* Cross-sectional area of steel is 2" for 3/8" plate and 2-1/2" for 1/2" and 3/4" plate at the outside edge of the saw-cut installation tolerance.

\*\* Spacing shown based on ACI 360 Design of Slabs-on-Ground.

\*\* Additional spacing specifications available on request.

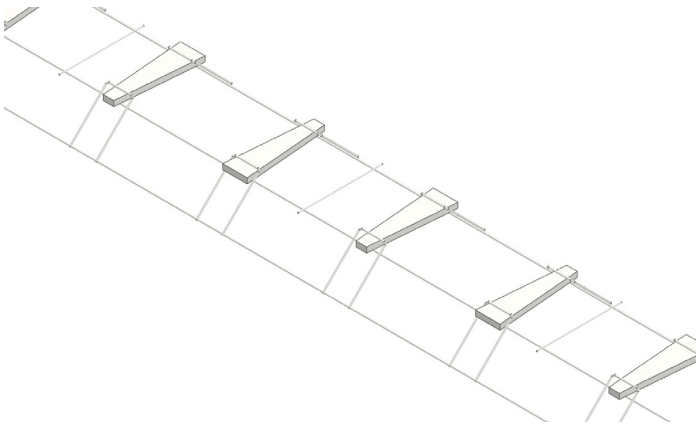
**SureBuilt**  
Concrete Forms & Accessories

2525 Armitage Ave  
Melrose Park, IL 60160  
708-493-9569  
[www.surebuilt-usa.com](http://www.surebuilt-usa.com)

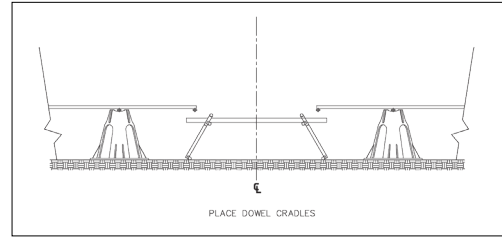


## ProBasket Installation

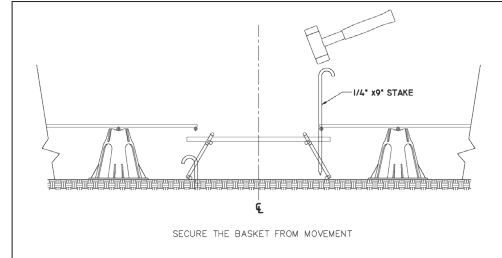
1. ProBaskets are supplied with Debond agent.
2. Each ProBasket should remain parallel in the horizontal plane during concrete placing and finishing operations.
3. Tapered dowels should not be closer than 12" to the intersection of any joint. Adjust basket position to avoid this condition.
4. Anchor basket with stake or concrete mud to prevent movement during pour. Position and tie the slab reinforcement.  
Optional: Cut shipping wires at midpoint to reduce restraining forces at contraction joint.
5. Place concrete, completely surrounding each ProBasket location. Use vibration to consolidate concrete, but do not strike or damage the assembly.
6. When concrete has been finished and reaches sufficient strength, saw cut the joint along the line of each ProBasket location.



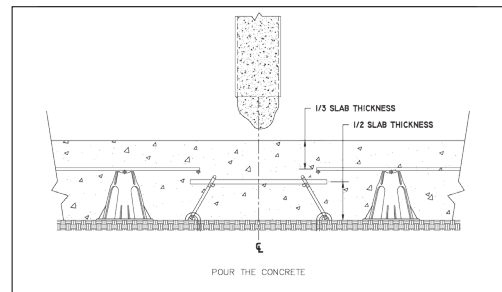
*ProBasket height is typically the midpoint of the slab. Basket length is typically 12', but can be cut-to-size. Plates can be 3/8" or 1/2" or 3/4" depending on project requirements, anticipated loads and slab thickness.*



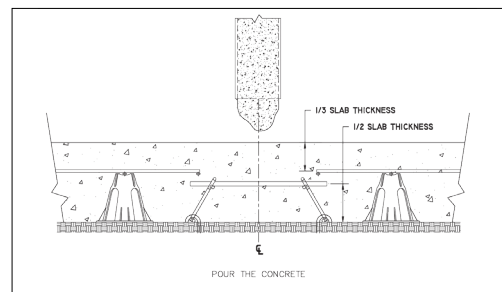
*Place basket at each joint.*



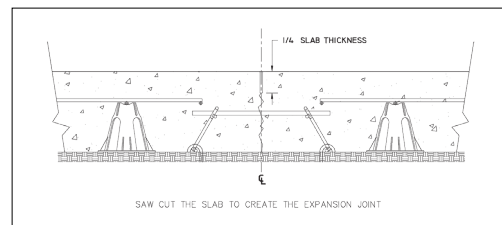
*Anchor basket with stake.*



*Optional: Cut the spacing / shipping wires.*



*Pour and consolidate concrete.*



*Saw cut concrete at joint location.*