



Pipe Braces



Pipe Braces

Adjustable Pipe Braces have a telescoping pipe for rough dimension, 6" threaded rod for adjustment and connecting shoes for anchoring. There are three sizes of Adjustable Pipe Brace, ranging from 7'-6" to 40'-0" (refer to the table for additional information).

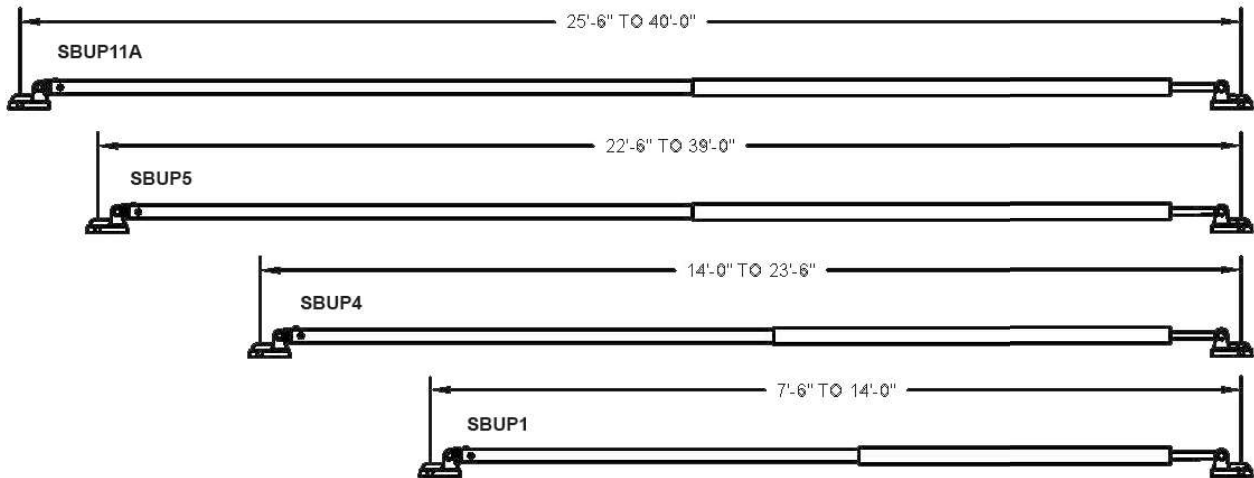
Pipe Braces have a fixed length, 18" threaded rod for adjustment and connecting shoes for anchoring. There are four sizes, including optional extension lengths, ranging from 16'-6" to 32'-3" (refer to the table for additional information).

Heavy-Duty Pipe Braces have a larger diameter pipe for greater capacity, 18" threaded rod for adjustment and connecting shoes anchoring. There are six sizes, including extensions, ranging from 31'-9" to 53'-3" (refer to the table for additional information).

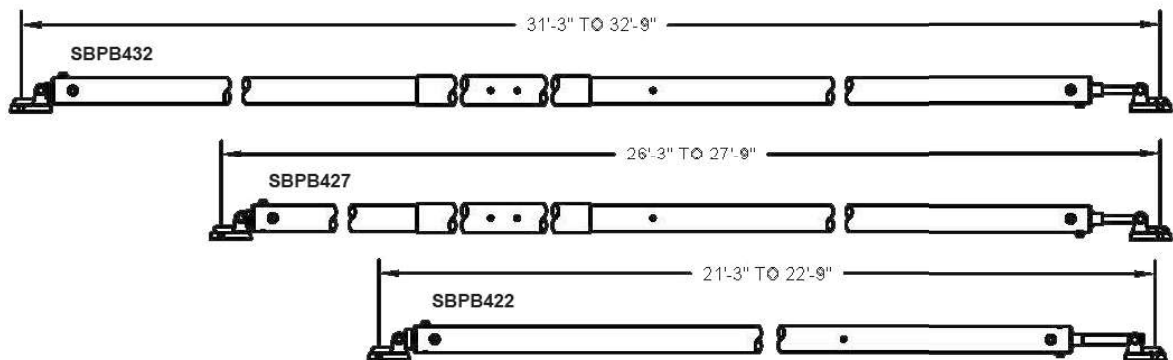
| Pipe Braces | | | | | |
|--|--------------------------|--------|--------|--|-----------------|
| Part No. | Description | Length | | Ultimate Brace Load* w/o Knee Bracing | Weight (lbs) |
| | | Min | Max | Maximum | |
| Adjustable Pipe Brace | | | | | |
| SBUP1 | Adjustable Pipe Brace | 7'-6" | 14'-0" | 9,750 / 6,600 lbs | 95.0 |
| SBUP4 | Adjustable Pipe Brace | 14'-0" | 23'-6" | 9,750 / 3,200 lbs | 130.0 |
| SBUP5 | Adjustable Pipe Brace | 22'-6" | 39'-0" | 8,063 / not recommended | 208.0 |
| SBUP11A | Adjustable Pipe Brace | 25'-6" | 40'-0" | 13,500 / 8,250 lbs | 295.0 |
| Pipe Brace (4" diameter) | | | | | |
| SBPB417 | Pipe Brace | 16'-6" | 17'-6" | 9,750 lbs | 105.0 |
| SBPB422 | Pipe Brace | 21'-0" | 22'-2" | 9,750 lbs | 136.0 |
| SBPB427 | Pipe Brace w/ 5' Ext | 26'-1" | 27'-3" | 7,200 lbs | 188.0 |
| SBPB432 | Pipe Brace w/ 10' Ext | 31'-1" | 32'-3" | 5,400 lbs | 224.0 |
| SBPBE45 | Pipe Brace Ext Only 5' | 5'-0" | - | - | 23.0 |
| SBPBE410 | Pipe Brace Ext Only 10' | 10'-0" | - | - | 46.0 |
| SBPBE415 | Pipe Brace Ext Only 15' | 15'-0" | - | - | 69.0 |
| Heavy-Duty Pipe Brace (5-1/2" diameter) | | | | | |
| SBPB51232 | HD Pipe Brace | 31'-9" | 33'-3" | 13,500 lbs | 295.0 |
| SBPB51237 | HD Pipe Brace w/ 5' Ext | 36'-9" | 38'-3" | 12,000 lbs | 360.0 |
| SBPB51242 | HD Pipe Brace w/ 10' Ext | 41'-9" | 43'-3" | 8,040 lbs | 400.0 |
| SBPB51252 | HD Pipe Brace w/ 20' Ext | 51'-9" | 53'-3" | 5,775 lbs | 520.0 |

* Ultimate Brace Load based on test reports and calculations.

Adjustable Pipe Braces

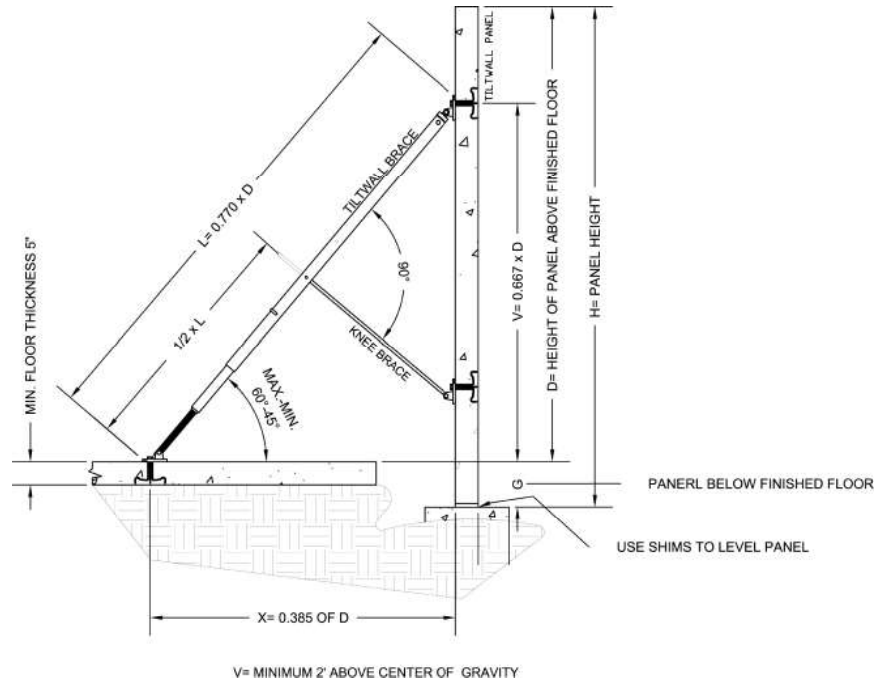


Fixed Pipe Braces (4" diameter)



Heavy-Duty Fixed Pipe Braces (5-1/2" diameter)





Adjustable Pipe Brace (SBUP1)

| D | V | X | L | Ultimate Brace Load* w/o Knee Bracing |
|--------|--------|-------|--------|--|
| 9'-9" | 6'-6" | 3'-9" | 7'-6" | 9,750 lbs |
| 10'-5" | 6'-11" | 4'-0" | 8'-0" | 9,750 lbs |
| 11'-8" | 7'-9" | 4'-6" | 9'-0" | 9,750 lbs |
| 14'-3" | 9'-6" | 5'-5" | 11'-0" | 9,750 lbs |
| 15'-7" | 10'-5" | 6'-0" | 12'-0" | 8,175 lbs |
| 18'-2" | 12'-1" | 7'-0" | 14'-0" | 6,600 lbs |

* Ultimate Brace Load based on test reports.

** Knee bracing requires knee, lateral and end bracing to obtain the loads indicated.

*** Range for 55-60 degree angle.

Note: Pipe Braces should always be inspected for unusual wear or damage after each use. Any Pipe Brace with missing parts, dents or kinks, indications of heating or other damage, should not be used until repaired.

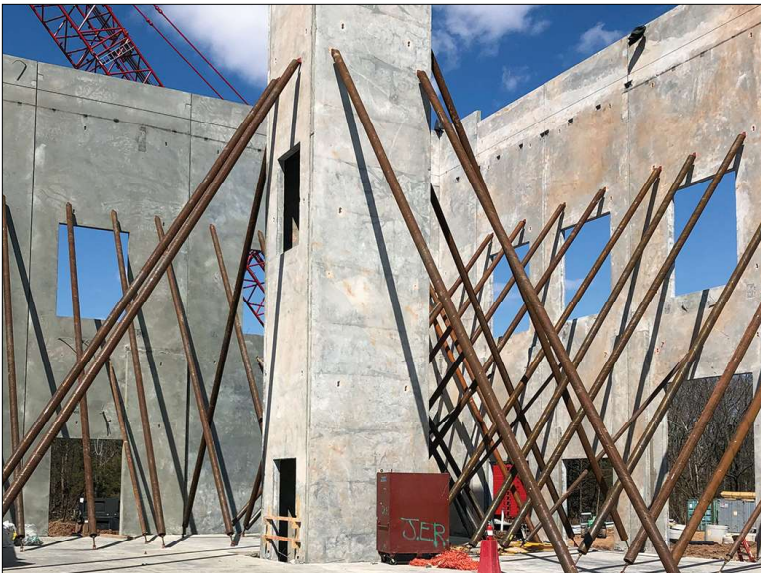
| Adjustable Pipe Brace (SBUP4) | | | | | |
|-------------------------------|---------|---------|---------|--|---|
| D | V | X | L | Ultimate Brace Load* w/o Knee Bracing | Ultimate Brace Load* with Knee Bracing** |
| 19'-6" | 13'-0" | 7'-6" | 15'-0" | 9,750 lbs | 9,750 lbs |
| 20'-4" | 13'-9" | 7'-11" | 15'-10" | 9,750 lbs | 9,750 lbs |
| 21'-8" | 14'-5" | 8'-4" | 16'-8" | 9,750 lbs | 9,750 lbs |
| 22'-9" | 15'-2" | 8'-9" | 17'-6" | 8,880 lbs | 9,750 lbs |
| 23'-10" | 15'-11" | 9'-2" | 18'-4" | 7,200 lbs | 9,750 lbs |
| 24'-11" | 16'-7" | 9'-7" | 19'-2" | 5,888 lbs | 9,750 lbs |
| 25'-11" | 17'-3" | 10'-0" | 20'-0" | 5,363 lbs | 9,750 lbs |
| 27'-0" | 18'-0" | 10'-5" | 20'-10" | 4,464 lbs | 9,750 lbs |
| 28'-2" | 18'-9" | 10'-10" | 21'-8" | 3,750 lbs | 9,750 lbs |
| 29'-3" | 19'-6" | 11'-3" | 22'-6" | 3,412 lbs | 9,750 lbs |
| 30'-6" | 20'-3" | 11'-8" | 23'-4" | 3,200 lbs | 9,750 lbs |

* Ultimate Brace Load based on test reports and calculations.

** Knee bracing requires knee, lateral and end bracing to obtain the loads indicated.

*** Range for 55-60 degree angle.

Note: Pipe Braces should always be inspected for unusual wear or damage after each use. Any Pipe Brace with missing parts, dents or kinks, indications of heating or other damage, should not be used until repaired.



| Adjustable Pipe Brace (SBUP5) | | | | | |
|-------------------------------|---------|---------|---------|--|---|
| D | V | X | L | Ultimate Brace Load* w/o Knee Bracing | Ultimate Brace Load* with Knee Bracing** |
| 29'-3" | 19'-6" | 11'-3" | 22'-6" | 8,063 lbs | 9,750 lbs |
| 30'-4" | 20'-3" | 11'-8" | 23'-4" | 7,988 lbs | 9,750 lbs |
| 31'-5" | 20'-11" | 12'-1" | 24'-2" | 7,200 lbs | 9,750 lbs |
| 32'-6" | 21'-8" | 12'-6" | 25'-0" | 6,375 lbs | 9,750 lbs |
| 33'-7" | 22'-5" | 12'-11" | 25'-10" | 5,175 lbs | 9,750 lbs |
| 34'-8" | 23'-1" | 13'-4" | 26'-8" | 4,375 lbs | 9,750 lbs |
| 35'-9" | 23'-10" | 13'-9" | 27'-6" | 3,833 lbs | 9,750 lbs |
| 36'-10" | 24'-7" | 14'-2" | 28'-4" | 3,150 lbs | 9,750 lbs |
| 37'-11" | 25'-3" | 14'-7" | 29'-2" | 2,625 lbs | 9,750 lbs |
| 39'-0" | 26'-0" | 15'-0" | 30'-0" | 2,400 lbs | 9,750 lbs |
| 40'-0" | 26'-8" | 15'-3" | 30'-10" | 2,025 lbs | 9,750 lbs |
| 41'-1" | 27'-5" | 15'-10" | 31'-8" | Not recommended | 9,450 lbs |
| 42'-2" | 28'-1" | 16'-3" | 32'-6" | Not recommended | 9,000 lbs |
| 43'-3" | 28'-10" | 16'-8" | 33'-4" | Not recommended | 8,400 lbs |
| 44'-4" | 29'-6" | 17'-1" | 34'-2" | Not recommended | 7,800 lbs |
| 45'-5" | 30'-3" | 17'-6" | 35'-0" | Not recommended | 7,500 lbs |
| 46'-6" | 31'-0" | 17'-11" | 35'-10" | Not recommended | 6,975 lbs |
| 47'-7" | 31'-9" | 18'-4" | 36'-8" | Not recommended | 6,487 lbs |
| 48'-8" | 32'-3" | 18'-9" | 37'-6" | Not recommended | 6,263 lbs |
| 49'-9" | 33'-2" | 19'-2" | 38'-4" | Not recommended | 5,050 lbs |
| 50'-8" | 33'-10" | 19'-6" | 39'-0" | Not recommended | 5,663 lbs |

* Ultimate Brace Load based on test reports and calculations.

** Knee bracing requires knee, lateral and end bracing to obtain the loads indicated.

*** Range for 45-60 degree angle.

Note: Pipe Braces should always be inspected for unusual wear or damage after each use. Any Pipe Brace with missing parts, dents or kinks, indications of heating or other damage, should not be used until repaired.



| Adjustable Pipe Brace (SBUP11A) | | | | |
|---------------------------------|---------|---------|---------|--|
| D | V | X | L | Ultimate Brace Load* w/o Knee Bracing |
| 33'-2" | 22'-2" | 12'-9" | 25'-6" | 13,500 lbs |
| 34'-2" | 22'-10" | 13'-2" | 26'-4" | 13,500 lbs |
| 35'-3" | 23'-6" | 13'-7" | 27'-2" | 13,500 lbs |
| 36'-4" | 24'-3" | 14'-0" | 28'-0" | 13,500 lbs |
| 37'-5" | 25'-0" | 14'-5" | 28'-10" | 13,500 lbs |
| 38'-6" | 25'-8" | 14'-10" | 29'-8" | 13,500 lbs |
| 39'-7" | 26'-5" | 15'-3" | 30'-6" | 13,500 lbs |
| 40'-8" | 27'-2" | 15'-8" | 31'-4" | 13,500 lbs |
| 41'-9" | 27'-10" | 16'-1" | 32'-2" | 13,500 lbs |
| 42'-10" | 28'-7" | 16'-6" | 33'-0" | 13,250 lbs |
| 43'-11" | 29'-4" | 16'-11" | 33'-10" | 13,000 lbs |
| 45'-0" | 30'-0" | 17'-4" | 34'-8" | 12,750 lbs |
| 46'-1" | 30'-9" | 17'-9" | 35'-6" | 12,500 lbs |
| 47'-2" | 31'-6" | 18'-2" | 36'-4" | 12,250 lbs |
| 48'-3" | 32'-2" | 18'-6" | 37'-2" | 12,000 lbs |
| 49'-4" | 32'-11" | 19'-0" | 38'-0" | 10,750 lbs |
| 50'-5" | 33'-8" | 19'-5" | 38'-10" | 9,500 lbs |
| 51'-6" | 34'-4" | 19'-10" | 39'-8" | 8,250 lbs |

| Pipe Braces | | | | | |
|-------------|------------------|-------------------|-------------------|--------|--|
| Part No. | D*** | V*** | X*** | L | Ultimate Brace Load* w/o Knee Bracing |
| SBPB417 | 15'-0" to 24'-0" | 13'-6" | 10'-3" | 17'-0" | 9,750 lbs |
| SBPB422 | 19'-0" to 31'-0" | 18'-1" to 19'-2" | 12'-8" to 11'-1" | 21'-7" | 9,750 lbs |
| SBPB427 | 23'-0" to 39'-0" | 22'-3" to 23'-7" | 15'-7" to 13'-7" | 26'-8" | 7,200 lbs |
| SBPB432 | 27'-0" to 46'-0" | 26'-5" to 27'-11" | 18'-6" to 16'-1" | 31'-8" | 5,400 lbs |
| SBPB51232 | 27'-0" to 46'-0" | 27'-0" to 28'-7" | 18'-11" to 16'-6" | 32'-6" | 13,500 lbs |
| SBPB51237 | 31'-0" to 53'-0" | 30'-6" to 31'-9" | 21'-5" to 18'-7" | 37'-6" | 12,000 lbs |
| SBPB51242 | 35'-0" to 60'-0" | 34'-1" to 35'-11" | 23'-10" to 20'-9" | 42'-6" | 8,040 lbs |
| SBPB51252 | 40'-0" to 75'-0" | 42'-3" to 44'-7" | 29'-7" to 25'-9" | 52'-6" | 5,775 lbs |

* Ultimate Brace Load based on test reports and calculations.

** Knee bracing requires knee, lateral and end bracing to obtain the loads indicated.

*** Range for 45-60 degree angle, minimum 2' above center of gravity..

Note: Pipe Braces should always be inspected for unusual wear or damage after each use. Any Pipe Brace with missing parts, dents or kinks, indications of heating or other damage, should not be used until repaired.

Bar Support – Wire slab bolsters and high chairs, with optional epoxy-coat, plastic-dip, plastic-tip or plate, to meet almost any slab requirement.

Bridge Deck – Overhang brackets and hangers provide an efficient deck forming solution for precast concrete or steel I-beam bridge structures.

Coil Ties – 2-Strut and 4-Strut designs, in standard and heavy-duty capacities, with optional cones, waterseals or custom combination, for job-built forming.

Dowels – Plates, sleeves, baskets and joint nosings for high-performance concrete floors.

Euro Rod – 15mm and 20mm taper ties, she-bolts, inner ties, washers and wing nuts compatible with European-brand forming systems.

Metal Rib – Leave-in-place, expanded galvanized mesh to form footings, bulkheads, grade beams, pier caps and blindside walls.

Pipe Braces – Contractor-preferred braces, with rated capacities and lengths ranging from 7'6" to 62'6", for almost any forming application.

Precast – Inserts, anchors, connectors and lifting systems for efficient precast concrete production.

Self-Riser – Integrated hydraulic system for multi-story building cores that virtually eliminates crane time.

Shoring – A conventional 12K load/leg system, with base plates, cross braces, screw jacks and U-heads, for productive deck support.

Snap Ties – Ties and brackets, with ¾" plywood and 2x4 lumber, create a simple and effective plywood forming system.

Staybox – A pre-engineered and pre-assembled rebar keyway that simplifies forming at wall and deck intersections.

Stud Rail – A reinforced column-to-deck connection that reduces shearing, transfers load further into the slab and eliminates column capitals.

SurePly™ – An industry-recognized handset system, with more than 80 standard panel and filler sizes, for almost any forming application.

Tilt-Up – A start-to-finish system of lifting inserts, plates and hardware for tilt-up panel construction.

Walers – Double channel walers align panels, carry taper tie loads and maximize the surface area of almost any gang.