

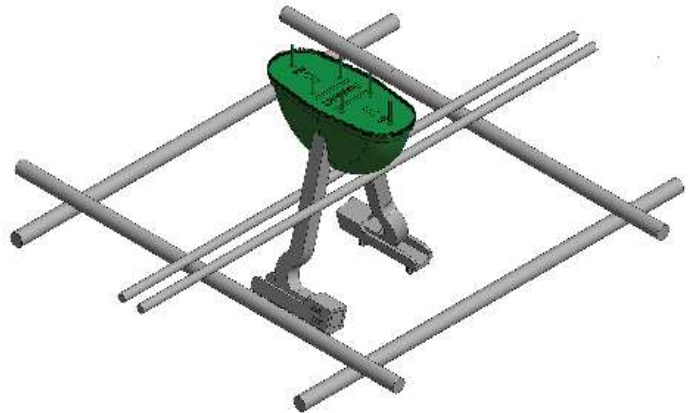
# SureLift Insert\*

## An effective lifting insert with disposable void former and slide-on plastic feet

The SureLift (SL) Insert is designed for lifting tilt-up panels. The insert develops high pull-out strength for every panel thickness up to 12" (see table).

The integrated plastic former has antennae to identify the insert location and removable cap to keep concrete out of the recess. Once the disposable former is removed, the lifting insert is exposed.

The slide-on plastic feet, available for +1/4", +1/2" or +3/4" height adjustment, keep the steel insert legs away from the panel face to prevent corrosion.



*\* U.S. Patent Pending*

SureLift (SL) Insert				
Part No.	Description	Structural Thickness	2.5:1 SWL* (Tension lbs)	2:1 SWL* (Shear lbs)
SBRL22SL6	SL Insert 6"	6"	10,450	14,800
SBRL22SL634	SL Insert 6-3/4"	6-3/4"	10,450	14,800
SBRL22SL7	SL Insert 7"	7"	13,500	19,000
SBRL22SL714	SL Insert 7-1/4"	7-1/4"	13,500	19,000
SBRL22SL712	SL Insert 7-1/2"	7-1/2"	13,500	19,000
SBRL22SL734	SL Insert 7-3/4"	7-3/4"	13,500	19,000
SBRL22SL8	SL Insert 8"	8"	15,500	21,900
SBRL22SL812	SL Insert 8-1/2"	8-1/2"	15,500	21,900
SBRL22SL9	SL Insert 9"	9"	18,350	22,000
SBRL22SL914	SL Insert 9-1/4"	9-1/4"	18,350	22,000
SBRL22SL934	SL Insert 9-3/4"	9-3/4"	18,350	22,000
SBRL22SL10	SL Insert 10"	10"	20,550	22,000
SBRL22SL11	SL Insert 11"	11"	22,000	22,000
SBRL22SL12	SL Insert 12"	12"	22,000	22,000

\* Safe Working Load (SWL) is based on testing in 3,000 psi concrete.

**SureBuilt**  
Concrete Forms & Accessories

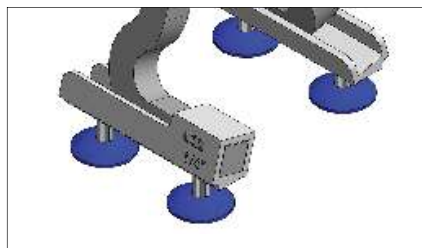
840 South 25th Ave  
Bellwood, IL 60104  
708-493-9569  
[www.surebuilt-usa.com](http://www.surebuilt-usa.com)



## Insulation Foot

Optional plastic feet are used for positioning a SureLift Insert on rigid foam without piercing the insulation surface. Four plastic feet are needed for each insert, two for each shoe.

The inserts should always be positioned and tied to rebar so the placement remains secure.

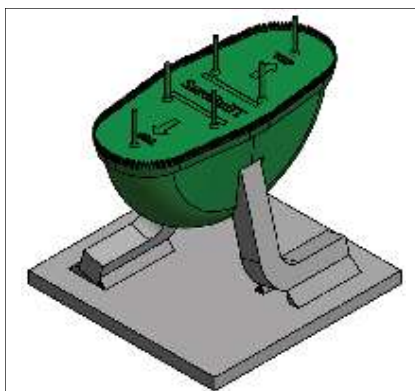


Insulation Foot	
Part No.	Description
SBIF	Insulation Foot

## SureLift Insert with Plate

When the structural thickness of an insulated panel is less than 6", a SureLift Insert with an integrated steel plate may be needed. The plate and weld attachment compensate for the smaller height of the insert.

The inserts should always be positioned and tied to rebar so the placement remains secure.



SureLift (SL) Insert with Plate				
Part No.	Description	Structural Thickness	2.5:1 SWL* (Tension lbs)	2:1 SWL* (Shear lbs)
SBRL22SLP5	SL Insert 5" wPlate	5"	9,085	12,800
SBRL22SLP512	SL Insert 5-1/2" wPlate	5-1/2"	9,750	13,700

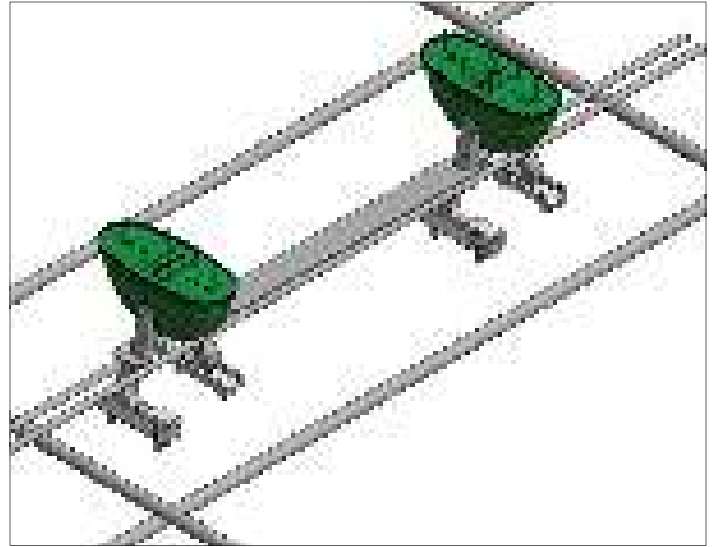
\* Safe Working Load (SWL) is based on testing in 3,000 psi concrete.

## Double SureLift Insert

The capacity of the SureLift Insert is increased by using two inserts in combination. The two inserts, joined with a steel Spacer Strap, develop an even higher pull-out strength for every panel thickness up to 12" (see table).



*A Spreader Beam is used with two Lifters and the double inserts to handle heavier panels.*



*Typical placement to prevent the Double Insert from moving. Tie all rebar so installation is secure.*

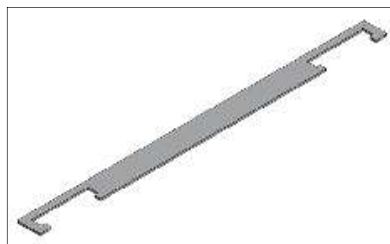
Double SureLift (SL) Insert* with Spacer Strap				
Part No.	Description	Structural Thickness	2.5:1 SWL** (Tension lbs)	2:1 SWL** (Shear lbs)
SBRL22SL6D	Double SL Insert 6" wSpacer	6"	20,900	29,550
SBRL22SL634D	Double SL Insert 6-3/4" wSpacer	6-3/4"	20,900	29,550
SBRL22SL7D	Double SL Insert 7" wSpacer	7"	26,900	32,000
SBRL22SL714D	Double SL Insert 7-1/4" wSpacer	7-1/4"	26,900	32,000
SBRL22SL712D	Double SL Insert 7-1/2" wSpacer	7-1/2"	26,900	32,000
SBRL22SL734D	Double SL Insert 7-3/4" wSpacer	7-3/4"	26,900	32,000
SBRL22SL8D	Double SL Insert 8" wSpacer	8"	30,950	32,000
SBRL22SL812D	Double SL Insert 8-1/2" wSpacer	8-1/2"	30,950	32,000
SBRL22SL9D	Double SL Insert 9" wSpacer	9"	32,000	32,000
SBRL22SL914D	Double SL Insert 9-1/4" wSpacer	9-1/4"	32,000	32,000
SBRL22SL934D	Double SL Insert 9-3/4" wSpacer	9-3/4"	32,000	32,000
SBRL22SL10D	Double SL Insert 10" wSpacer	10"	32,000	32,000
SBRL22SL11D	Double SL Insert 11" wSpacer	11"	32,000	32,000
SBRL22SL12D	Double SL Insert 12" wSpacer	12"	32,000	32,000

\* Double SureLift Insert is two inserts connected with a Spacer Strap.

\*\* Safe Working Load (SWL) based on testing in 3,000 psi concrete.

## Spacer Strap

The Spacer Strap is used to properly position two inserts. The resulting Double SureLift Insert provides the proper positioning, increased working load and lifting locations needed for large panels.



The double insert should always be positioned and tied to rebar so the placement remains secure.

Spacer Strap	
Part No.	Description
SBRL22SS18	Spacer Strap (18" OC)

## Double SureLift Insert with Plate and Strap

When the structural thickness of a large insulated panel is less than 6", two inserts with an integrated plate and strap may be needed. The resulting Double SureLift Insert provides the proper positioning, increased working load and lifting locations needed for large panels.

Double SureLift (SL) Insert* with Plate and Spacer Strap				
Part No.	Description	Structural Thickness	2.5:1 SWL** (Tension lbs)	2:1 SWL** (Shear lbs)
SBRL22SLP5D	Double SL Insert 5" wPlate/Strap	5"	18,170	25,600
SBRL22SLP512D	Double SL Insert 5-1/2" wPlate/Strap	5-1/2"	19,500	27,400

\* Double SureLift Insert is two inserts connected with a Spacer Strap.

\*\* Safe Working Load (SWL) based on testing in 3,000 psi concrete.