

Straight Leg Erection Anchor

Designed for horizontal-to-vertical edge lifts and shear rotation of thin-wall panels

Lifting tilt-up panels from the edge is simple and safe with the Straight Leg Erection Anchor. The body of the Straight Erection Anchor is shaped to integrate with the panel reinforcement. The addition of a shear plate to the anchor design eliminates the need for a shear bar, making it easier to install.

Two steel “ears” at the top of the anchor “hug” either side of the Ring-Lift Clutch, restricting rotation during lateral pulls. Any lateral forces are directed into the anchor to prevent edge spalling.

A Disposable Former snaps over the top of the Straight Leg Erection Anchor. This removable and disposable plastic former keeps the lifting point identifiable and accessible after concrete placement is complete.

Though the anchor has an integrated shear plate to simplify installation, there are times when a Tension Bar might be added to maximize load capacity.



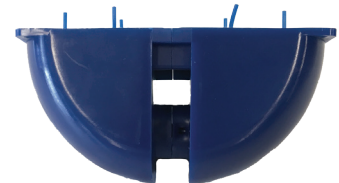
Straight Leg Erection Anchor*

Part No.	Description/Capacity	Clutch ID	Width	Length	Thickness
SBSLE4TSPG	Straight Leg Erection Anchor 4T	4-5T	3-1/16"	10-1/2"	5/8"
SBSLE8TSPGN	Straight Leg Anchor 8T - Narrow	8-10T	3-1/2"	13"	3/4"
SBSLE8TSPG	Straight Leg Erection Anchor 8T	8-10T	4"	13"	3/4"

* Panels less than 6" thick require 4T Straight Leg Erection Anchor.

Disposable Former

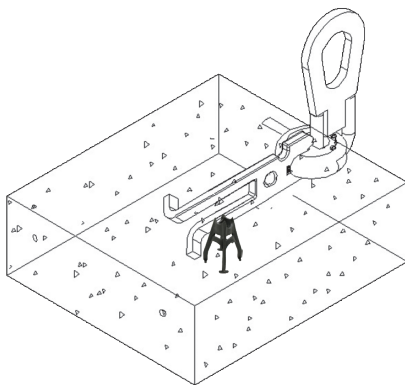
Part No.	Description	Clutch ID
SBRLDF5T	Disposable Former 5T (Orange)	4-5T
SBRLDF8T	SB Disposable Former 8T (Blue)	8-10T



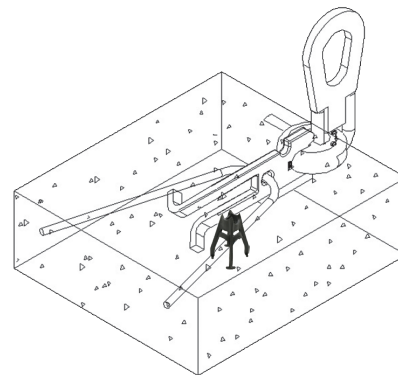
Straight Leg Erection Anchor* (with no Shear Bar)

Capacity (tons)	Clutch ID marking	Panel Thickness**	Shear***	Tension w/o Tension Bar****	Tension with Tension Bar*****
4T	4-5T	5"	3,450 lbs	3,600 lbs	8,000 lbs
4T	4-5T	5-1/2"	4,200 lbs	4,800 lbs	8,000 lbs
8T	8-10T	6"	4,600 lbs	8,500 lbs	22,000 lbs
8T	8-10T	6-1/2"	5,000 lbs	11,000 lbs	22,000 lbs
8T	8-10T	7"	5,400 lbs	16,500 lbs	22,000 lbs
8T	8-10T	7-1/2"	5,684 lbs	20,000 lbs	22,000 lbs
8T	8-10T	8"	5,958 lbs	22,000 lbs	22,000 lbs
8T	8-10T	9"	6,589 lbs	22,000 lbs	22,000 lbs
8T	8-10T	10"	7,041 lbs	22,000 lbs	22,000 lbs
8T	8-10T	11"	7,448 lbs	22,000 lbs	22,000 lbs
8T	8-10T	12"	7,853 lbs	22,000 lbs	22,000 lbs

- * Minimum distance to panel corners is 24", minimum distance between inserts is 24".
- ** Anchor must be centered within panel thickness, panels less than 6" thick require 4T anchor.
- *** 2.5:1 safety factor in 3,000 psi concrete.
- **** 2:1 safety factor in 3,000 psi concrete.
- ***** The 4T requires minimum 54" #5 Tension Bar, 8T requires minimum 66" #6 Tension Bar.



*Straight Leg Erection Anchor
with chair support and
no Tension Bar*



*Straight Leg Erection Anchor
with chair support and
Tension Bar at 30° spread*