

SureBuilt

Concrete Forms & Accessories



SoloForm™ Forming System



A revolutionary design makes SoloForm the only concrete forming system you will ever need!

The strongest handset system on the market is rated at 1,500 psf, and doubles as a gangform system, with the addition of larger 4'x8' and 8'x8' panels... the same common components minimize inventory and maximize productivity, no matter the forming application.

Simple Connections

A small, lightweight Wedge Clamp is used to connect the panel joints. The clamp can be positioned at any joint with one hand, then secured with a hammer strike. This simple connection makes assembly and any reconfiguration quick and efficient.

Lightweight Design

Handset panels weigh just 6.75 lbs per square foot, making it lightweight, yet exceptionally durable. The 1,500 psf rating, makes it the strongest handset system on the market. While the larger 8'x8' gangform panel weighs 8.75 lbs per square foot, it only requires four taper ties for a 1,500 psf rating. This lightweight design provides both modular versatility and strength.

Heavy-Duty Components

Long service life is virtually guaranteed with heavy-duty components. The side rail and cross members are rolled from 50 ksi steel. Precision welding turns individual components into a single structural frame. Each frame is further reinforced with corner blocks for durability. The completed frame is then galvanized to resist corrosion.

American-Made

The entire system is sourced and manufactured in the United States. From the steel shapes, to rolling the frame profile, to automated welding, to hot-dip galvanizing, to birch plywood facing, and a thorough final inspection, SoloForm is the only concrete forming system you will ever need.



Larger sizes and less hardware maximize forming productivity.



A small, lightweight Wedge Clamp is used to connect panel joints along the side rail.



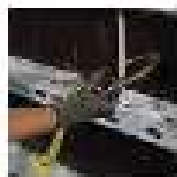
**50 ksi Steel
Side Rail**



**50 ksi Steel
Profile**



**Galvanized
Frame**



**Climbing
Rods**



**Open
Tie Box**



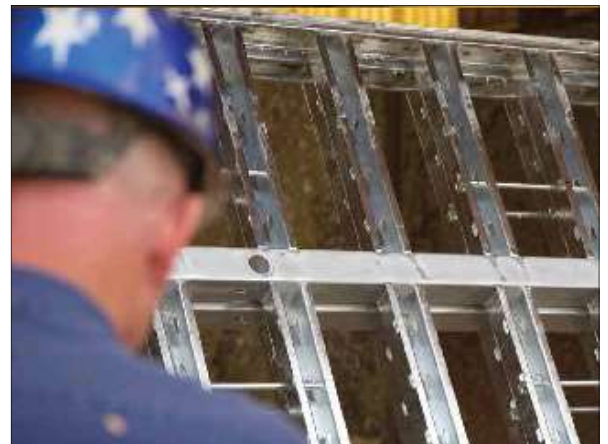
**Handset
Versatility**



**Gangform
Productivity**



Precision welding turns components into a single structural frame.



Each American-made component receives a thorough inspection before shipment.



Panels

8' x 8' Super Panel

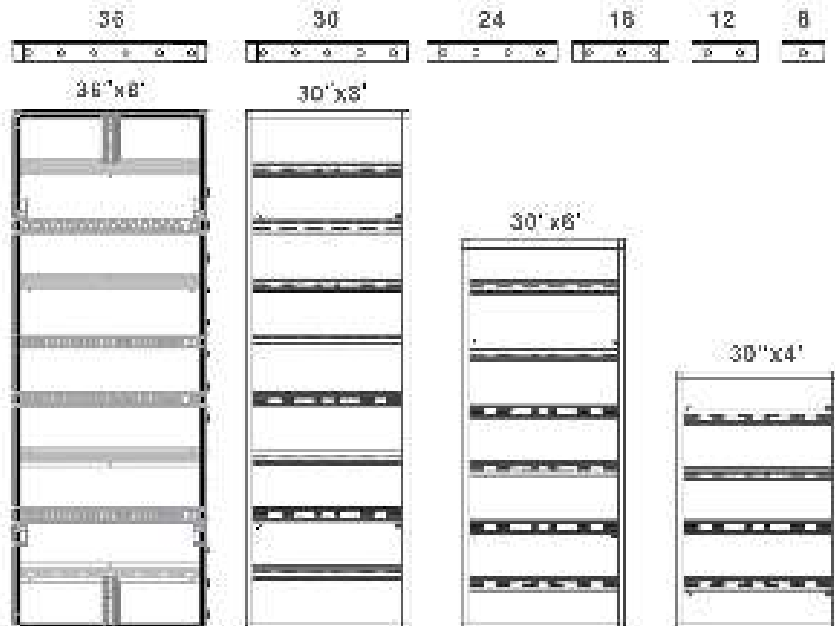
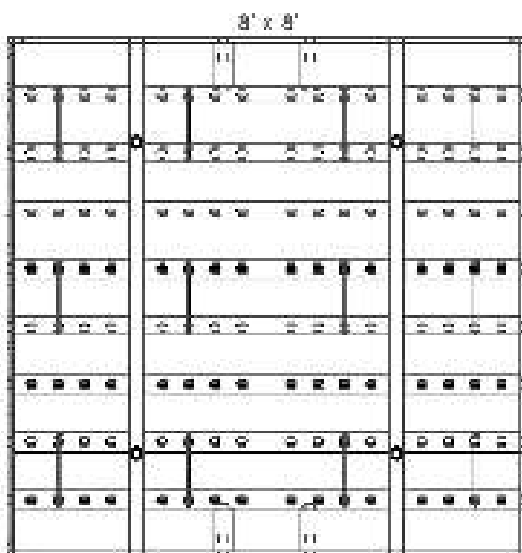
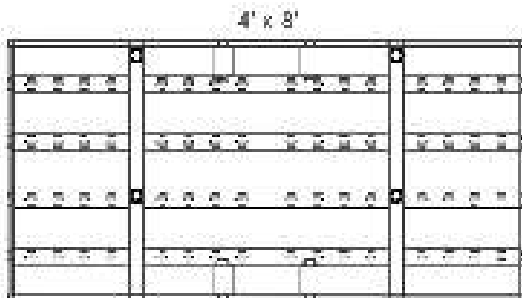
- 50 ksi steel profiles
- Reinforced corner block
- Integral climbing rods for tie-off
- Open tie box
- 1500 PSF rating

4' x 8' Panel

- 50 ksi steel profiles
- Reinforced corner block
- Integral climbing rods for tie-off
- Open tie box

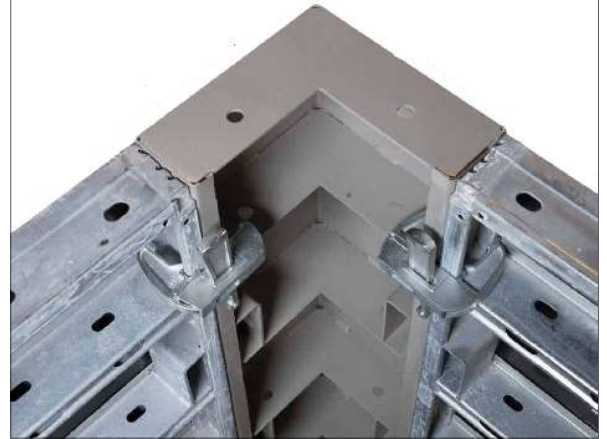
36" Multi-Purpose Panel

- 50 ksi steel profiles
- Reinforced corner block
- Integral climbing rods for tie-off
- Open tie box
- Bulkhead and column applications
- Pilaster applications





The Wedge Clamp is designed to join and align the panel frames in all directions.



A durable Inside Corner can be clamped or bolted to adjoining forms.



The Adjustable Wedge Clamp is designed to capture a filler and adjoining panel frames.



A durable Outside Corner can be clamped or bolted to adjoining forms.

Vertical Joint	
Form Height	Clamps
8'	3
6'	2
5'	2
4'	2
3'	2

Vertical Joints within 6' of Corner	
Form Height	Clamps
Wall Thickness up to 24"	
8'	4
6'	3
5'	2
4'	2
3'	2

Horizontal Joints	
Form Width	Clamps
36" to 18"	2
12" to 8"	1

SoloForm Forms	
Part No.	Description
SBSF180864	SoloForm Panel 8' x 8'
SBSF180464	SoloForm Panel 4' x 8'
SBSF180830	SoloForm Panel 30" x 8'
SBSF180824	SoloForm Filler 24" x 8'
SBSF180818	SoloForm Filler 18" x 8'
SBSF180812	SoloForm Filler 12"x8'
SBSF180808	SoloForm Filler 8" x 8'
SBSF180803	SoloForm Multi-Purp 36" x 8'
SBSF181610	SoloForm Inside Corner 8'
SBSF181611	SoloForm Outside Corner 8'
SBSF181650	SoloForm Filler Rail 8'
SBSF160630	SoloForm Panel 30" x 6'
SBSF160624	SoloForm Filler 24" x 6'
SBSF160618	SoloForm Filler 18" x 6'
SBSF160612	SoloForm Filler 12" x 6'
SBSF160608	SoloForm Filler 8" x 6'
SBSF160803	SoloForm Multi-Purp 36" x 6'
SBSF161610	SoloForm Inside Corner 6'
SBSF161611	SoloForm Outside Corner 6'
SBSF161650	SoloForm Filler Rail 6'
SBSF140630	SoloForm Panel 30" x 4'
SBSF140624	SoloForm Filler 24" x 4'
SBSF140618	SoloForm Filler 18" x 4'
SBSF140612	SoloForm Filler 12" x 4'
SBSF140608	SoloForm Filler 8" x 4'
SBSF140803	SoloForm Multi-Purp 36" x 4'
SBSF141610	SoloForm Inside Corner 4'
SBSF141611	SoloForm Outside Corner 4'
SBSF141650	SoloForm Filler Rail 4'

SoloForm Hardware	
Part No.	Description
SBSF300110	Wedge Clamp
SBSF300115	Adjustable Wedge Clamp
SBSF302210	Top Tie Bracket
SBSF302112	Multi-Claw
SBSF303200	15mm Connecting Bolt
SBSF304215	Footing Clip
SBSF305110	Walkway Bracket
SBSF305111	Guard Rail Post
SBSF306210	Brace Bracket
SBSF307112	Swivel Crane Clamp

15mm Taper Ties	
Part No.	Description
SBETT1615MM	15mm Taper Tie 16" 5/8:7/8
SBETT2415MM	15mm Taper Tie 24" 5/8:7/8
SBETT3215MM	15mm Taper Tie 32" 5/8:7/8
SBETT4015MM	15mm Taper Tie 40" 5/8:7/8
SBER15MMWN	15mm Wing Nut
SBER15MMWNW	15mm Wing Nut Plate
SBER15MMMWS	15mm Wing Nut wSwivel Plate

Accessories



Footing Clip



Filler Rail



Multi-Claw



Top Tie Bracket



Swivel Tie Plate



Waler as Strongback



Waler as Bulkhead



Tomahawk Bolt



Hammerhead Bolt

Articulated Waler – Radius forming from 20' to 180', with 3/4" plywood, aluminum or wood beams, and an adjustable waler.

Bar Support – Wire slab bolsters and high chairs, with optional epoxy-coat, plastic-dip, plastic-tip or plate, to meet almost any slab requirement.

Bridge Deck – Overhang brackets and hangers provide an efficient deck forming solution for precast concrete or steel I-beam bridge structures.

Coil Ties – 2-Strut and 4-Strut designs, in standard and heavy-duty capacities, with optional cones, waterseals or custom combination, for job-built forming.

Euro Rod – 15mm and 20mm taper ties, she-bolts, inner ties, washers and wing nuts compatible with European-brand forming systems.

Floor Dowels – Plates, sleeves, baskets and joint nosings for high-performance concrete floors.

Pipe Braces – Contractor-preferred braces, with rated capacities and lengths ranging from 7'6" to 62'6", for almost any forming application.

Precast – Inserts, anchors, connectors and lifting systems for efficient precast concrete production.

Self-Riser – Integrated hydraulic system for multi-story building cores that virtually eliminates crane time.

Shoring – A conventional 10K load/leg system, with base plates, cross braces, screw jacks and U-heads, for productive deck support.

Snap Ties – Ties and brackets, with 3/4" plywood and 2x4 lumber, create a simple and effective plywood forming system.

Staybox – A pre-engineered and pre-assembled rebar keyway that simplifies forming at wall and deck intersections.

Stud Rail – A reinforced column-to-deck connection that reduces shearing, transfers load further into the slab and eliminates column capitals.

SureCurve™ – Concrete tanks and curved walls quickly take shape with this flexible and reusable gangform system.

SurePly™ – An industry-recognized handset system, with more than 80 standard panel and filler sizes, for almost any forming application.

Tilt-Up – A start-to-finish system of lifting inserts, plates and hardware for tilt-up panel construction.

Walers – Double channel walers align panels, carry taper tie loads and maximize the surface area of almost any gang.