

Slab Edge Protector

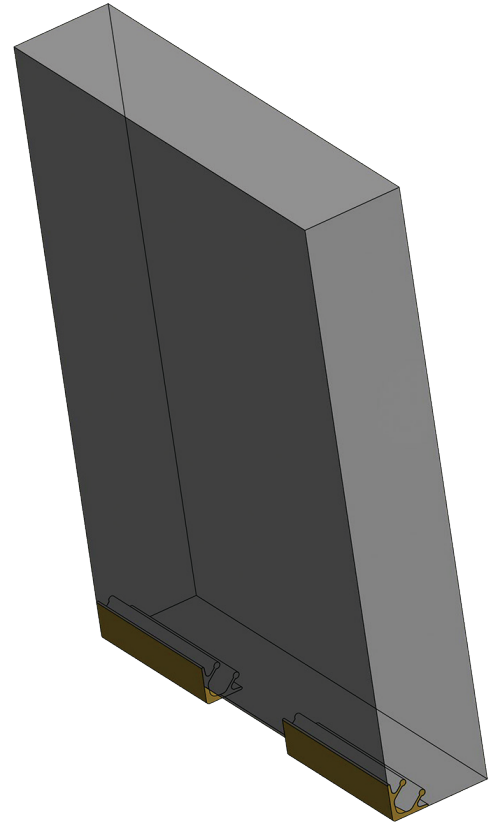
A cost-effective way to protect concrete floors when handling tilt-up panels

Slab Edge Protectors are a great way to protect concrete floors when installing tilt-up panels. Slab Edge Protectors are made from rigid, durable PVC and prevent damage to new floors.

Eliminates Repair - Slab Edge Protector saves your floors from damage. Crews won't spend valuable time and money repairing scratched or damaged floors.

Improves Quality - Crews using Slab Edge Protector can walk away from completed concrete floors with pride.

Protects Floor - Slab Edge Protector remains in place along the edge of the panel to protect concrete floors from damage during handling.



The integral plastic edge protects the concrete when handling and moving tilt-up panels.

Slab Edge Protector	
Part No.	Description
SBSEP24	Slab Edge Protector 24"

Installation:

1. Fasten two Slab Edge Protectors, one in each corner, along the bottom edge of the form.
2. If the width is greater than 20 feet, then fasten another Slab Edge Protector at the center.
3. Place and vibrate concrete, making the Slab Edge Protector an integral part of the panel.
4. Strip the forms to expose the plastic edges of the Slab Edge Protector.
5. Use the plastic edges to protect the concrete when handling and moving panels.

