

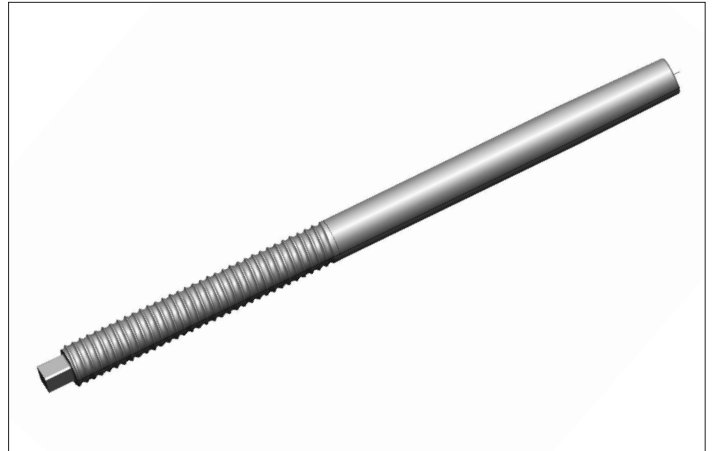
She-Bolts

High-capacity and versatile tie system used with crane-handled gangform systems

She-Bolts are heavy duty, reusable form ties used for medium and heavy concrete forming applications. She-Bolts are used in combination with an Inner Tie Rod or Coil Rod cut to length on the job site.

The expendable Inner Tie Rod joins two She-Bolts to create the form tie assembly. A Flat Washer and Wing Nut (following page) placed on the threaded end transfers the concrete load to the walers.

Applying waterproof grease evenly to She-Bolts prior to concrete placement facilitates removal. The squared end can be turned with a wrench during removal. Worn or damaged She-Bolts and hardware must be replaced.



High-capacity She-Bolts and Inner Ties Rods can be used with different forming systems.

She-Bolt				
Part No.	Description	Inner Tie Rod Size	Safe Working Load *	Weight/lbs
SBSB3417	She-Bolt 3/4" x 17"	1/2"	9,000 lbs	2.9
SBSB3420	She-Bolt 3/4" x 20"	1/2"	9,000 lbs	3.0
SBSB3424	She-Bolt 3/4" x 24"	1/2"	9,000 lbs	4.0
SBSB11418	She-Bolt 1-1/4" x 18"	3/4"	18,000 lbs	5.0
SBSB11420	She-Bolt 1-1/4" x 20"	3/4"	18,000 lbs	5.8
SBSB11424	She-Bolt 1-1/4" x 24"	3/4"	18,000 lbs	7.1
SBSB11220	She-Bolt 1-1/2" x 20"	1"	37,500 lbs	8.2
SBSB11224	She-Bolt 1-1/2" x 24"	1"	37,500 lbs	10.3
SBSB11230	She-Bolt 1-1/2" x 30"	1"	37,500 lbs	13.3

* Safe working load based on safety factor of 2:1.

SureBuilt
Concrete Forms & Accessories

840 South 25th Ave
Bellwood, IL 60104
708-493-9569
www.surebuilt-usa.com



Inner Tie Rods*		
Part No.	Description	She-Bolt Size
SBITR1208	Inner Tie Rod 1/2" x 8"	1/2"
SBITR1210	Inner Tie Rod 1/2" x 10"	1/2"
SBITR1212	Inner Tie Rod 1/2" x 12"	1/2"
SBITR3408	Inner Tie Rod 3/4" x 8"	3/4"
SBITR3410	Inner Tie Rod 3/4" x 10"	3/4"
SBITR3412	Inner Tie Rod 3/4" x 12"	3/4"
SBITR108	Inner Tie Rod 1" x 8"	1-1/2"
SBITR110	Inner Tie Rod 1" x 10"	1-1/2"
SBITR112	Inner Tie Rod 1" x 12"	1-1/2"



Optional neoprene waterseal available on request.

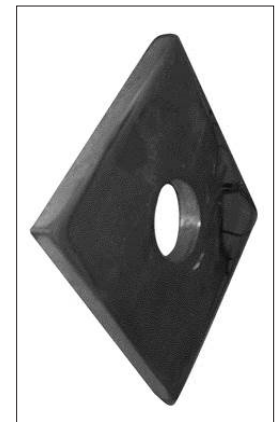
* Other sizes available on request.

Wing Nuts		
Part No.	Description	SWL* (lbs)
SBWN34	SB Wing Nut 3/4"	18,000
SBWN114	SB Wing Nut 1-1/4"	52,000
SBWN112	SB Wing Nut 1-1/2"	80,000



* Safe Working Load (tension) at safety factor of 2:1.
May be limited by She-Bolt capacity.

Flat Washers*		
Part No.	Description	Dimensions
SBFW12551316	SB Flat Washer 1/2" Plate	5" x 5" with 13/16" Hole
SBFW12551116	SB Flat Washer 1/2" Plate	5" x 5" with 1-1/16" Hole
SBFW34551316	SB Flat Washer 3/4" Plate	5" x 5" with 13/16" Hole
SBFW34551116	SB Flat Washer 3/4" Plate	5" x 5" with 1-1/16" Hole
SBFW34551516	SB Flat Washer 3/4" Plate	5" x 5" with 1-5/16" Hole
SBFW1551116	SB Flat Washer 1" Plate	5" x 5" with 1-5/16" Hole
SBFW1551916	SB Flat Washer 1" Plate	5" x 5" with 1-9/16" Hole



* Other sizes available on request.