



Pipe Braces



Pipe Braces

Adjustable Pipe Braces have a telescoping pipe for rough dimension, 6" threaded rod for adjustment and connecting shoes for anchoring. There are three sizes of Adjustable Pipe Brace, ranging from 7'-6" to 40'-0" (refer to the table for additional information).

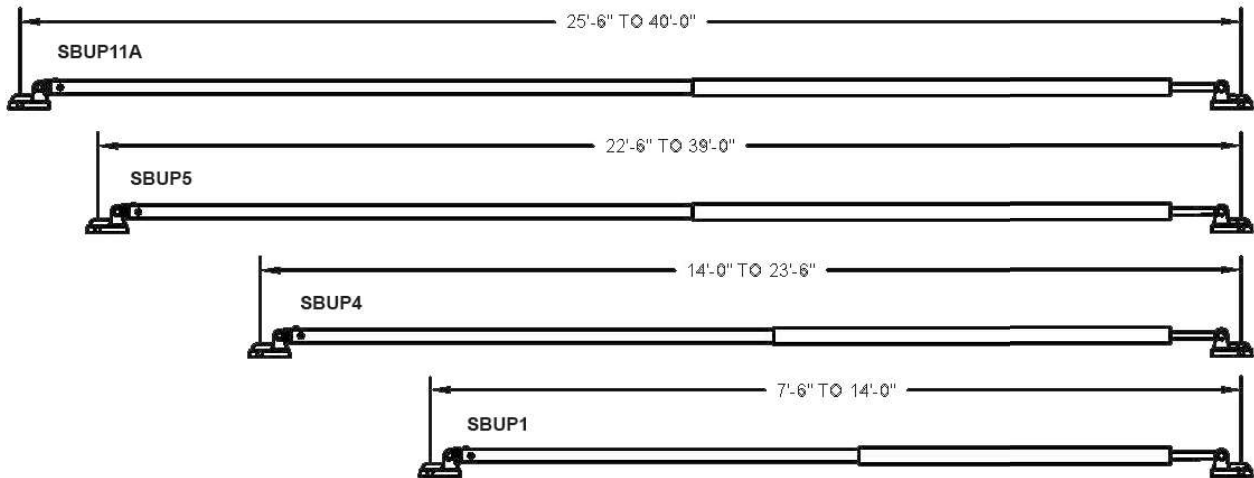
Pipe Braces have a fixed length, 18" threaded rod for adjustment and connecting shoes for anchoring. There are four sizes, including optional extension lengths, ranging from 16'-6" to 32'-3" (refer to the table for additional information).

Heavy-Duty Pipe Braces have a larger diameter pipe for greater capacity, 18" threaded rod for adjustment and connecting shoes anchoring. There are six sizes, including extensions, ranging from 31'-9" to 53'-3" (refer to the table for additional information).

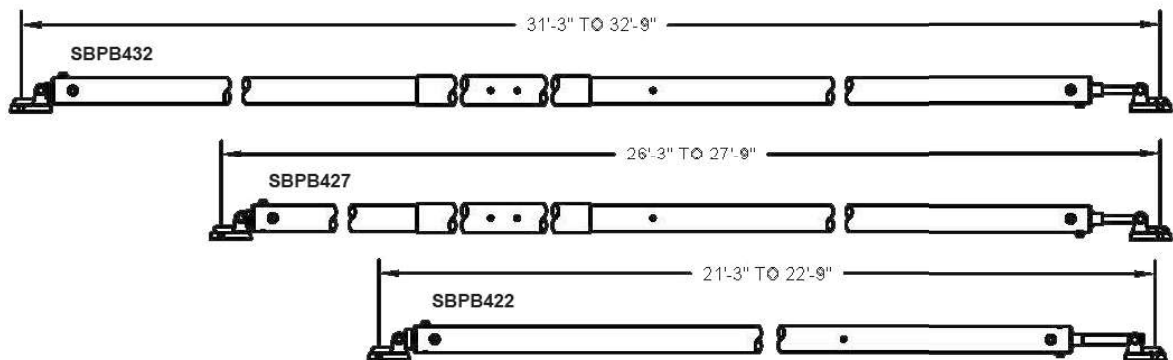
Pipe Braces					
Part No.	Description	Length		Ultimate Brace Load* w/o Knee Bracing	Weight (lbs)
		Min	Max	Maximum	
Adjustable Pipe Brace					
SBUP1	Adjustable Pipe Brace	7'-6"	14'-0"	9,750 / 6,600 lbs	95.0
SBUP4	Adjustable Pipe Brace	14'-0"	23'-6"	9,750 / 3,200 lbs	130.0
SBUP5	Adjustable Pipe Brace	22'-6"	39'-0"	8,063 / not recommended	208.0
SBUP11A	Adjustable Pipe Brace	25'-6"	40'-0"	13,500 / 8,250 lbs	295.0
Pipe Brace (4" diameter)					
SBPB417	Pipe Brace	16'-6"	17'-6"	9,750 lbs	105.0
SBPB422	Pipe Brace	21'-0"	22'-2"	9,750 lbs	136.0
SBPB427	Pipe Brace w/ 5' Ext	26'-1"	27'-3"	7,200 lbs	188.0
SBPB432	Pipe Brace w/ 10' Ext	31'-1"	32'-3"	5,400 lbs	224.0
SBPBE45	Pipe Brace Ext Only 5'	5'-0"	-	-	23.0
SBPBE410	Pipe Brace Ext Only 10'	10'-0"	-	-	46.0
SBPBE415	Pipe Brace Ext Only 15'	15'-0"	-	-	69.0
Heavy-Duty Pipe Brace (5-1/2" diameter)					
SBPB51232	HD Pipe Brace	31'-9"	33'-3"	13,500 lbs	295.0
SBPB51232LHRH18	HD Pipe Brace w/ 18" Extensions	31'-9"	34'-9"	13,500 lbs	295.0
SBPB51237	HD Pipe Brace w/ 5' Ext	36'-9"	38'-3"	12,000 lbs	360.0
SBPB51242	HD Pipe Brace w/ 10' Ext	41'-9"	43'-3"	8,040 lbs	400.0
SBPB51252	HD Pipe Brace w/ 20' Ext	51'-9"	53'-3"	5,775 lbs	520.0

* Ultimate Brace Load based on test reports and calculations.

Adjustable Pipe Braces

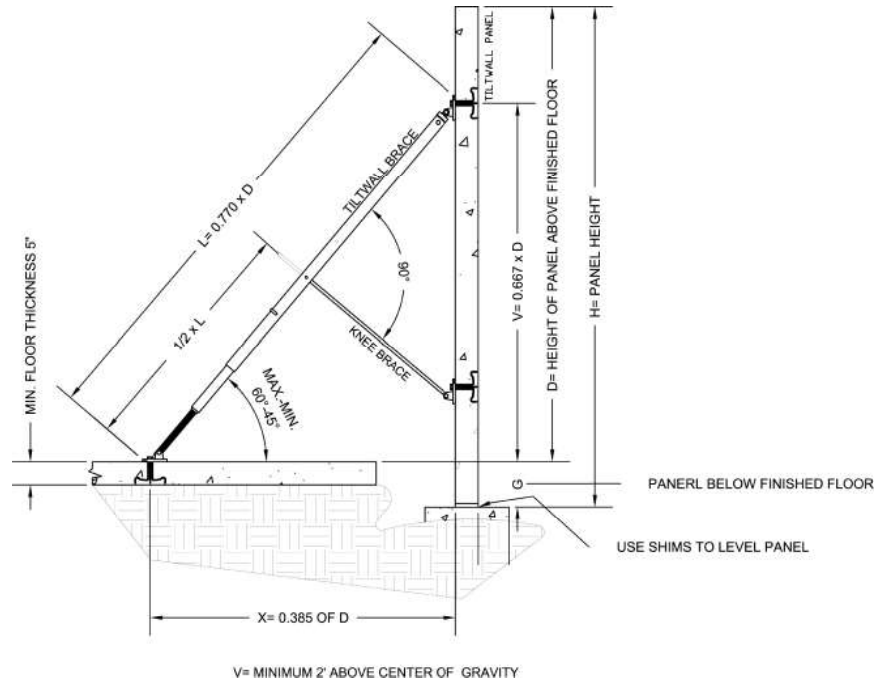


Fixed Pipe Braces (4" diameter)



Heavy-Duty Fixed Pipe Braces (5-1/2" diameter)





Adjustable Pipe Brace (SBUP1)

D	V	X	L	Ultimate Brace Load* w/o Knee Bracing
9'-9"	6'-6"	3'-9"	7'-6"	9,750 lbs
10'-5"	6'-11"	4'-0"	8'-0"	9,750 lbs
11'-8"	7'-9"	4'-6"	9'-0"	9,750 lbs
14'-3"	9'-6"	5'-5"	11'-0"	9,750 lbs
15'-7"	10'-5"	6'-0"	12'-0"	8,175 lbs
18'-2"	12'-1"	7'-0"	14'-0"	6,600 lbs

* Ultimate Brace Load based on test reports.

** Knee bracing requires knee, lateral and end bracing to obtain the loads indicated.

*** Range for 55-60 degree angle.

Note: Pipe Braces should always be inspected for unusual wear or damage after each use. Any Pipe Brace with missing parts, dents or kinks, indications of heating or other damage, should not be used until repaired.

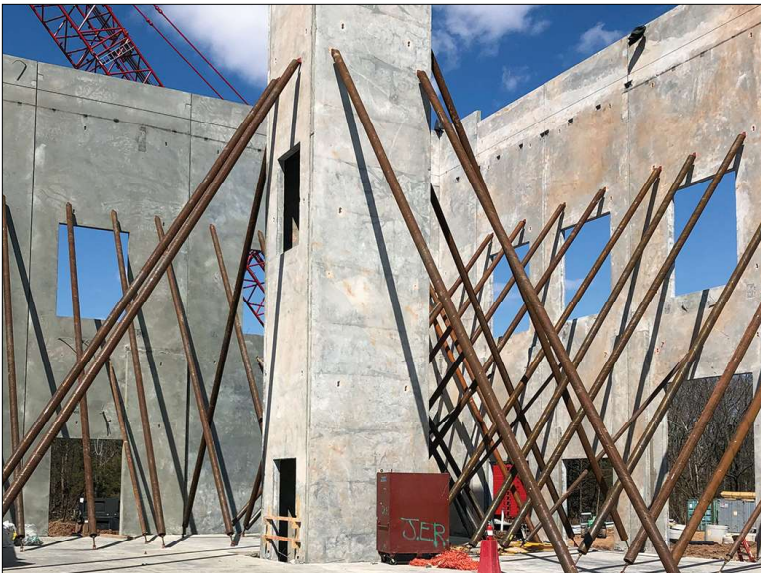
Adjustable Pipe Brace (SBUP4)					
D	V	X	L	Ultimate Brace Load* w/o Knee Bracing	Ultimate Brace Load* with Knee Bracing**
19'-6"	13'-0"	7'-6"	15'-0"	9,750 lbs	9,750 lbs
20'-4"	13'-9"	7'-11"	15'-10"	9,750 lbs	9,750 lbs
21'-8"	14'-5"	8'-4"	16'-8"	9,750 lbs	9,750 lbs
22'-9"	15'-2"	8'-9"	17'-6"	8,880 lbs	9,750 lbs
23'-10"	15'-11"	9'-2"	18'-4"	7,200 lbs	9,750 lbs
24'-11"	16'-7"	9'-7"	19'-2"	5,888 lbs	9,750 lbs
25'-11"	17'-3"	10'-0"	20'-0"	5,363 lbs	9,750 lbs
27'-0"	18'-0"	10'-5"	20'-10"	4,464 lbs	9,750 lbs
28'-2"	18'-9"	10'-10"	21'-8"	3,750 lbs	9,750 lbs
29'-3"	19'-6"	11'-3"	22'-6"	3,412 lbs	9,750 lbs
30'-6"	20'-3"	11'-8"	23'-4"	3,200 lbs	9,750 lbs

* Ultimate Brace Load based on test reports and calculations.

** Knee bracing requires knee, lateral and end bracing to obtain the loads indicated.

*** Range for 55-60 degree angle.

Note: Pipe Braces should always be inspected for unusual wear or damage after each use. Any Pipe Brace with missing parts, dents or kinks, indications of heating or other damage, should not be used until repaired.



Adjustable Pipe Brace (SBUP5)					
D	V	X	L	Ultimate Brace Load* w/o Knee Bracing	Ultimate Brace Load* with Knee Bracing**
29'-3"	19'-6"	11'-3"	22'-6"	8,063 lbs	9,750 lbs
30'-4"	20'-3"	11'-8"	23'-4"	7,988 lbs	9,750 lbs
31'-5"	20'-11"	12'-1"	24'-2"	7,200 lbs	9,750 lbs
32'-6"	21'-8"	12'-6"	25'-0"	6,375 lbs	9,750 lbs
33'-7"	22'-5"	12'-11"	25'-10"	5,175 lbs	9,750 lbs
34'-8"	23'-1"	13'-4"	26'-8"	4,375 lbs	9,750 lbs
35'-9"	23'-10"	13'-9"	27'-6"	3,833 lbs	9,750 lbs
36'-10"	24'-7"	14'-2"	28'-4"	3,150 lbs	9,750 lbs
37'-11"	25'-3"	14'-7"	29'-2"	2,625 lbs	9,750 lbs
39'-0"	26'-0"	15'-0"	30'-0"	2,400 lbs	9,750 lbs
40'-0"	26'-8"	15'-3"	30'-10"	2,025 lbs	9,750 lbs
41'-1"	27'-5"	15'-10"	31'-8"	Not recommended	9,450 lbs
42'-2"	28'-1"	16'-3"	32'-6"	Not recommended	9,000 lbs
43'-3"	28'-10"	16'-8"	33'-4"	Not recommended	8,400 lbs
44'-4"	29'-6"	17'-1"	34'-2"	Not recommended	7,800 lbs
45'-5"	30'-3"	17'-6"	35'-0"	Not recommended	7,500 lbs
46'-6"	31'-0"	17'-11"	35'-10"	Not recommended	6,975 lbs
47'-7"	31'-9"	18'-4"	36'-8"	Not recommended	6,487 lbs
48'-8"	32'-3"	18'-9"	37'-6"	Not recommended	6,263 lbs
49'-9"	33'-2"	19'-2"	38'-4"	Not recommended	5,050 lbs
50'-8"	33'-10"	19'-6"	39'-0"	Not recommended	5,663 lbs

* Ultimate Brace Load based on test reports and calculations.

** Knee bracing requires knee, lateral and end bracing to obtain the loads indicated.

*** Range for 45-60 degree angle.

Note: Pipe Braces should always be inspected for unusual wear or damage after each use. Any Pipe Brace with missing parts, dents or kinks, indications of heating or other damage, should not be used until repaired.



Adjustable Pipe Brace (SBUP11A)				
D	V	X	L	Ultimate Brace Load* w/o Knee Bracing
33'-2"	22'-2"	12'-9"	25'-6"	13,500 lbs
34'-2"	22'-10"	13'-2"	26'-4"	13,500 lbs
35'-3"	23'-6"	13'-7"	27'-2"	13,500 lbs
36'-4"	24'-3"	14'-0"	28'-0"	13,500 lbs
37'-5"	25'-0"	14'-5"	28'-10"	13,500 lbs
38'-6"	25'-8"	14'-10"	29'-8"	13,500 lbs
39'-7"	26'-5"	15'-3"	30'-6"	13,500 lbs
40'-8"	27'-2"	15'-8"	31'-4"	13,500 lbs
41'-9"	27'-10"	16'-1"	32'-2"	13,500 lbs
42'-10"	28'-7"	16'-6"	33'-0"	13,250 lbs
43'-11"	29'-4"	16'-11"	33'-10"	13,000 lbs
45'-0"	30'-0"	17'-4"	34'-8"	12,750 lbs
46'-1"	30'-9"	17'-9"	35'-6"	12,500 lbs
47'-2"	31'-6"	18'-2"	36'-4"	12,250 lbs
48'-3"	32'-2"	18'-6"	37'-2"	12,000 lbs
49'-4"	32'-11"	19'-0"	38'-0"	10,750 lbs
50'-5"	33'-8"	19'-5"	38'-10"	9,500 lbs
51'-6"	34'-4"	19'-10"	39'-8"	8,250 lbs

Pipe Braces					
Part No.	D***	V***	X***	L	Ultimate Brace Load* w/o Knee Bracing
SBPB417	15'-0" to 24'-0"	13'-6"	10'-3"	17'-0"	9,750 lbs
SBPB422	19'-0" to 31'-0"	18'-1" to 19'-2"	12'-8" to 11'-1"	21'-7"	9,750 lbs
SBPB427	23'-0" to 39'-0"	22'-3" to 23'-7"	15'-7" to 13'-7"	26'-8"	7,200 lbs
SBPB432	27'-0" to 46'-0"	26'-5" to 27'-11"	18'-6" to 16'-1"	31'-8"	5,400 lbs
SBPB51232	27'-0" to 46'-0"	27'-0" to 28'-7"	18'-11" to 16'-6"	32'-6"	13,500 lbs
SBPB51237	31'-0" to 53'-0"	30'-6" to 31'-9"	21'-5" to 18'-7"	37'-6"	12,000 lbs
SBPB51242	35'-0" to 60'-0"	34'-1" to 35'-11"	23'-10" to 20'-9"	42'-6"	8,040 lbs
SBPB51252	40'-0" to 75'-0"	42'-3" to 44'-7"	29'-7" to 25'-9"	52'-6"	5,775 lbs

* Ultimate Brace Load based on test reports and calculations.

** Knee bracing requires knee, lateral and end bracing to obtain the loads indicated.

*** Range for 45-60 degree angle, minimum 2' above center of gravity..

Note: Pipe Braces should always be inspected for unusual wear or damage after each use. Any Pipe Brace with missing parts, dents or kinks, indications of heating or other damage, should not be used until repaired.

Bar Support – Wire slab bolsters and high chairs, with optional epoxy-coat, plastic-dip, plastic-tip or plate, to meet almost any slab requirement.

Bridge Deck – Overhang brackets and hangers provide an efficient deck forming solution for precast concrete or steel I-beam bridge structures.

Coil Ties – 2-Strut and 4-Strut designs, in standard and heavy-duty capacities, with optional cones, waterseals or custom combination, for job-built forming.

Dowels – Plates, sleeves, baskets and joint nosings for high-performance concrete floors.

Euro Rod – 15mm and 20mm taper ties, she-bolts, inner ties, washers and wing nuts compatible with European-brand forming systems.

Metal Rib – Leave-in-place, expanded galvanized mesh to form footings, bulkheads, grade beams, pier caps and blindside walls.

Pipe Braces – Contractor-preferred braces, with rated capacities and lengths ranging from 7'6" to 62'6", for almost any forming application.

Precast – Inserts, anchors, connectors and lifting systems for efficient precast concrete production.

Self-Riser – Integrated hydraulic system for multi-story building cores that virtually eliminates crane time.

Shoring – A conventional 12K load/leg system, with base plates, cross braces, screw jacks and U-heads, for productive deck support.

Snap Ties – Ties and brackets, with ¾" plywood and 2x4 lumber, create a simple and effective plywood forming system.

Staybox – A pre-engineered and pre-assembled rebar keyway that simplifies forming at wall and deck intersections.

Stud Rail – A reinforced column-to-deck connection that reduces shearing, transfers load further into the slab and eliminates column capitals.

SurePly™ – An industry-recognized handset system, with more than 80 standard panel and filler sizes, for almost any forming application.

Tilt-Up – A start-to-finish system of lifting inserts, plates and hardware for tilt-up panel construction.

Walers – Double channel walers align panels, carry taper tie loads and maximize the surface area of almost any gang.