

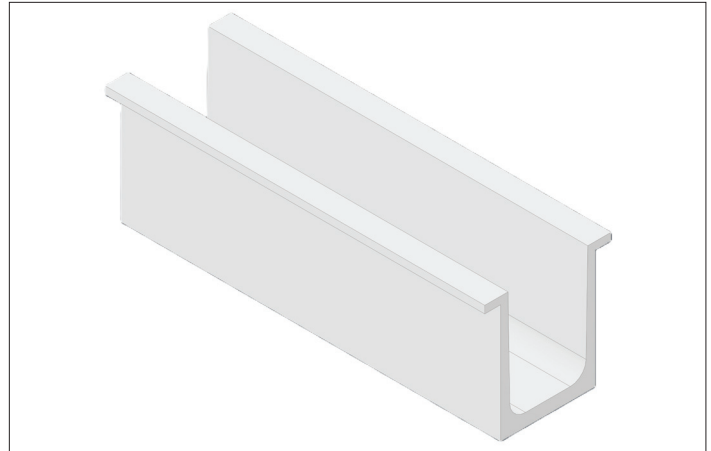
ParaCleat

High strength, non-corrosive, plastic anchor

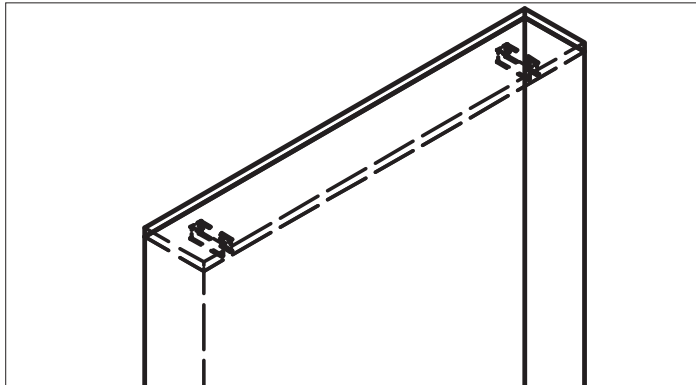
The ParaCleat is an ICC approved fastener and has been developed as a solution for fastening treated wood to the top of parapet walls. Metal flashing is then fastened to the treated wood.

ParaCleat can be used to splice edge form boards together and comes with pre-drilled holes making it the most universal, efficient, cost-effective, and simple method for attaching parapet wood.

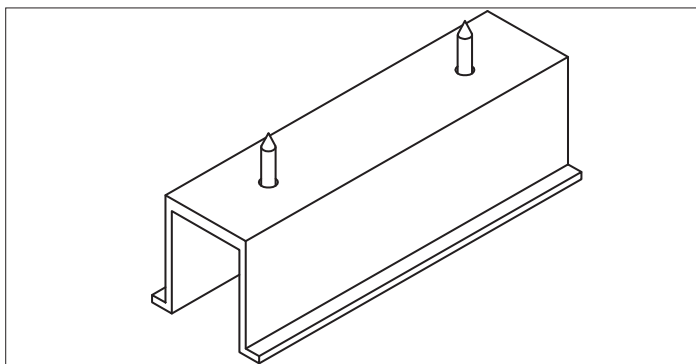
ParaCleat fasteners comply with requirements provided under NRCA-SPF Chapter 8 guidelines.



Included: (2) 1/4" x 1-1/2" ZYTEC™ GX-Black flat-headed wood screw anchors for exterior use.

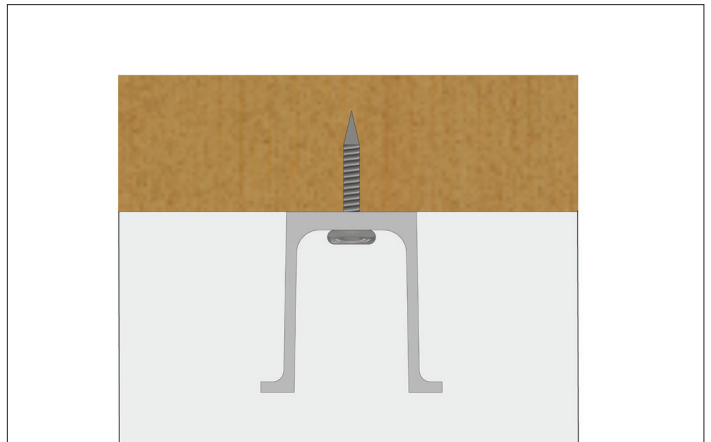


ParaCleat fastened to tilt-up concrete wall panel



ParaCleat	
Part No.	Description
SBPCWC	2" x 2" x 6" ParaCleat with Screws*

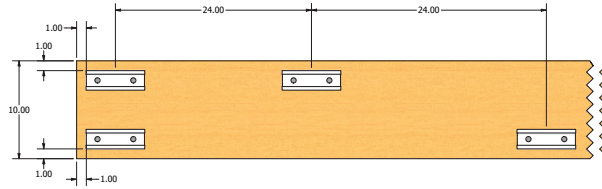
* ParaCleat Capacity based on using the provided 1/4" x 1-1/2" ZYTEC™ GX-Black Wood Screw Anchors



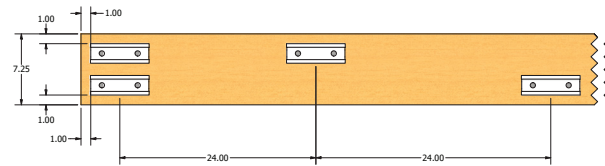
ParaCleat fastened to tilt-up concrete wall panel

Instructions for Use:

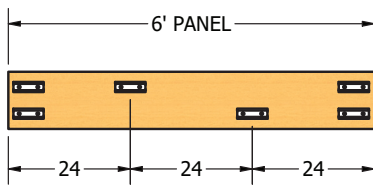
1. Install ParaCleat with the provided 1/4" x 1-1/2" wood screw anchors.
2. Space ParaCleats 2' on center. Confirm with EOR or as noted on drawings.



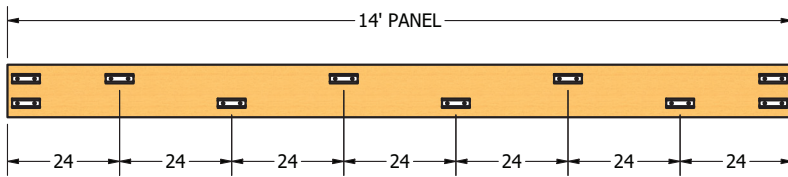
10" wide parapet board ParaCleat spacing example.



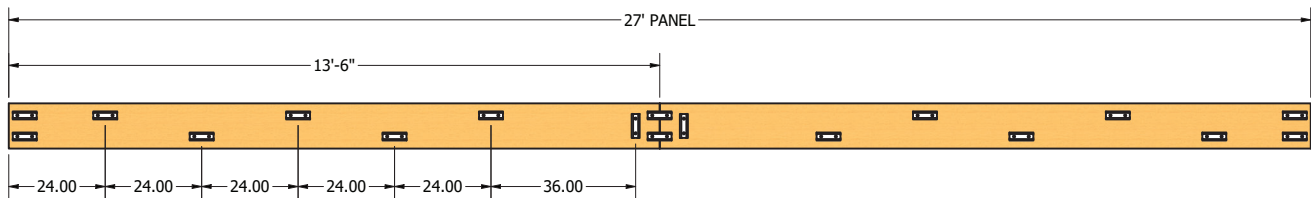
7-1/4" wide parapet board ParaCleat spacing example.



6' section of tilt-up concrete wall panel with ParaCleats



14' section of tilt-up concrete wall panel with ParaCleats

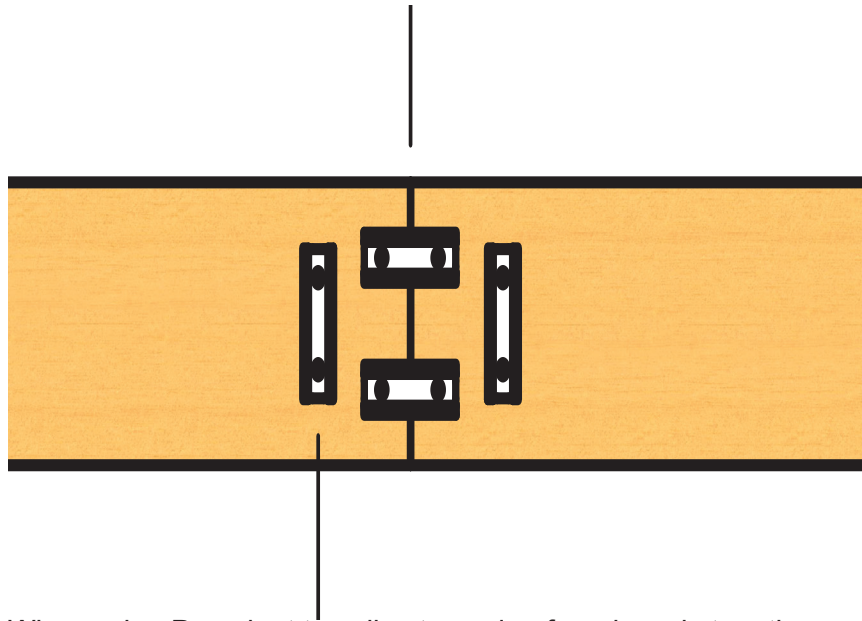


27' section of tilt-up concrete wall panel with ParaCleats

ParaCleat Shear & Tension Capacity		
Product	Ultimate Shear Capacity per ParaCleat*	Ultimate Tension Capacity per ParaCleat*
ParaCleat	1600 lbs	800 lbs

* ParaCleat Capacity based on using the provided 1/4" x 1-1/2" ZYTEC™ GX-Black Wood Screw Anchors

Splicing an Edge Form Board



When using Paracleat to splice two edge form boards together, overlap the board joint with each Paracleat, and add additional vertical Paracleat on each side of board.

Approved Coating for Compatible Anchor Screws

- Included fasteners are construction lag screws for structural use in timber construction. These fasteners include a proprietary Zytec™ GX coating that is equivalent to the protection provided by code-approved hot-dipped galvanized coatings meetins ASTM A 153, Class D (IBC Section 2304.10.6 and IRC Section R317.3).

The Zytec™ GX coating is tested and recognized for use in ground contact pressure treated lumber (MCA), exterior, freshwater, general construction applications (e.g., Ground Contact AWPA UC1-UC4A MCA).

The Zytec™ GX coated fasteners are approved for use in FRT lumber, provided the conditions set forth by the FRT lumber manufacturer are met, including appropriate strength reductions.