

# HGA Bracket

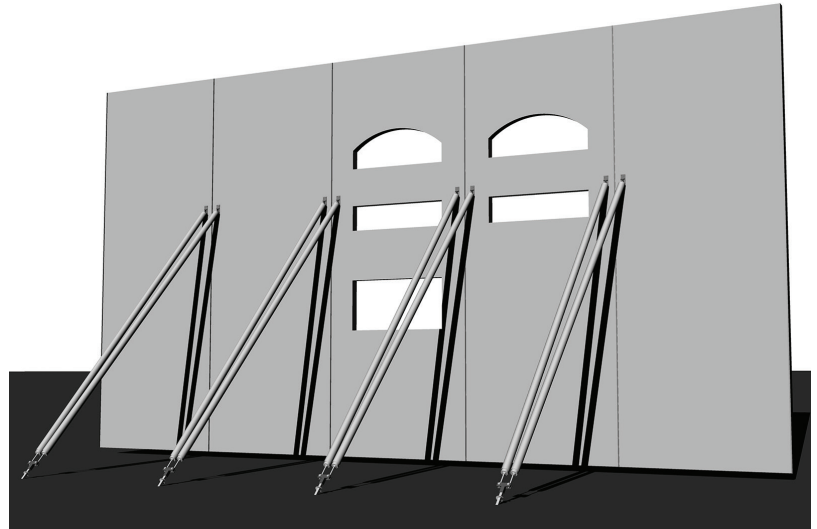
## Patent pending device for quickly connecting tilt-up brace shoes to helical ground anchors

The HGA Bracket provides a simple connection point between helical ground anchors and tilt-up braces. The design eliminates the need to remove, then reattach, pipe brace shoes. The pipe brace shoe bolts directly to the bracket.

The HGA Bracket is available in a 2-Brace or 1-Brace configuration. Of course, the tilt-up panel engineering, bracing and anchoring requirements will determine which HGA Bracket is the most effective.

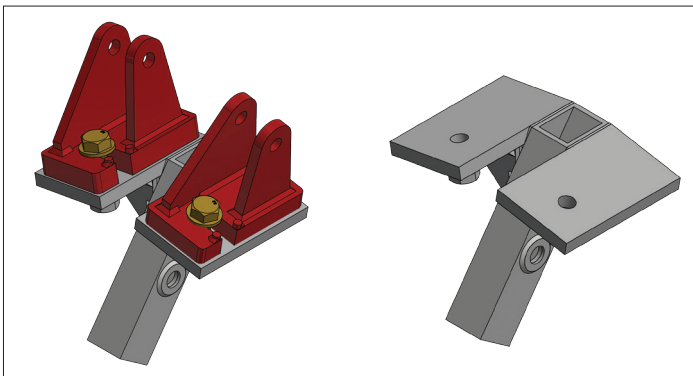
*Note: The load-ratings of the helical ground anchor, tilt-up brace and HGA Bracket must be considered simultaneously for maximum allowable capacity and spacing.*

*Note: Helical Ground Anchor, Pipe Brace, and/or soil conditions may be the controlling factor. Capacities for all components must be considered when engineering a bracing configuration.*

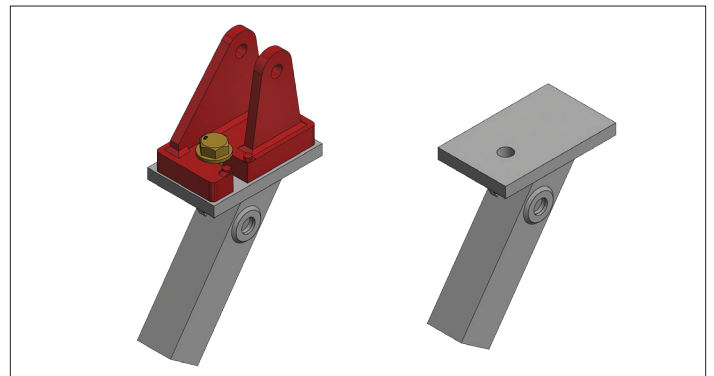


| HGA Bracket |                     |            |
|-------------|---------------------|------------|
| Part No.    | Description         | SWL* (lbs) |
| SBHGA1BWP   | HGA 1-Brace Bracket | 10,000     |
| SBHGA2BWP   | HGA 2-Brace Bracket | 20,000     |

\* Safe Working Load (SWL) using 1.67:1 safety factor.



HGA 2-Brace Bracket with and without brace shoe.



HGA 1-Brace Bracket with and without brace shoe.