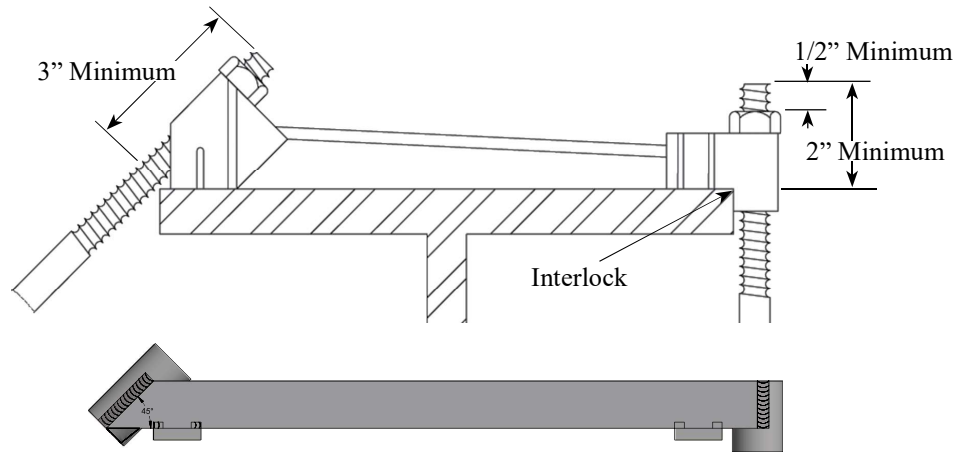
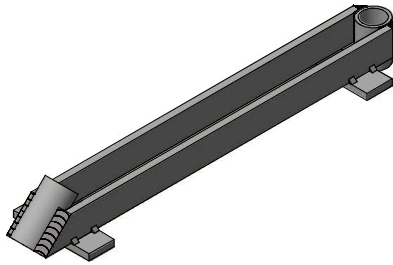


# Heavy Duty Exterior Hangers

## Designed for use with HD Bridge Overhang Bracket

### Type 9-A Exterior Hanger

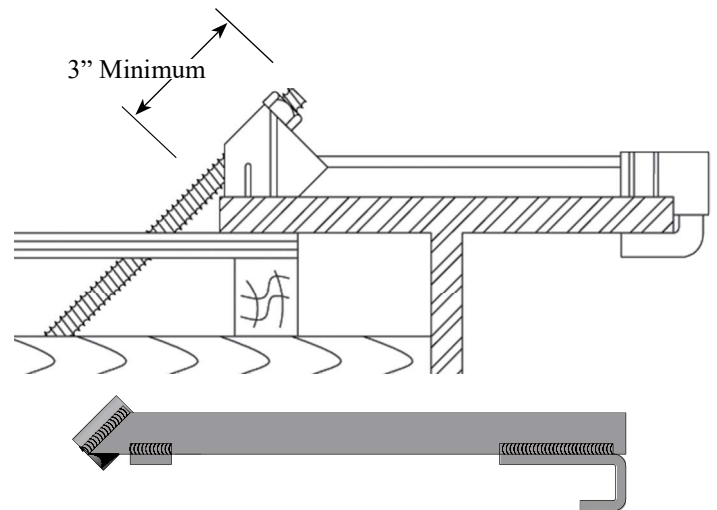
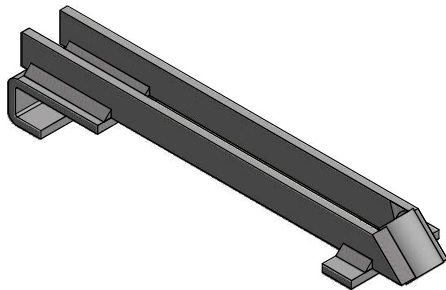
The Type 9-A Exterior Hanger is fabricated with 90° and 45° circular clips welded to 1/4" x 1" steel plates. End clips require 3/4" diameter coil rod and 3/4" Heavy Hex Coil Nut or double 3/4" Coil Nuts and Cut Washer to develop safe working load.



*Safe Working Load: 11,300 lbs for 9-A  
Industry safety factor 2:1  
Warning: Hanger must be load equally*

### Type 9-AB Exterior Half Hanger

The Type 9-AB Half Hanger is used to support overhang formwork when stay-in-place decking is used on the interior bays. The Half Hanger consists of a 90° end clip with a J-shape to hook onto the beam flange and a 45° end circular clip to support the overhang formwork. End clips require 3/4" diameter coil rod and 3/4" Heavy Hex Coil Nut or double 3/4" Coil Nuts and Cut Washer to develop safe working load.



*Safe Working Load: 11,300 lbs for 9-AB  
Industry safety factor 2:1  
Warning: Hanger must be load equally*

**SureBuilt**  
Concrete Forms & Accessories

840 South 25th Ave  
Bellwood, IL 60104  
708-493-9569  
[www.surebuilt-usa.com](http://www.surebuilt-usa.com)

