

Groutec

Mechanical splicing system for horizontal and vertical precast elements

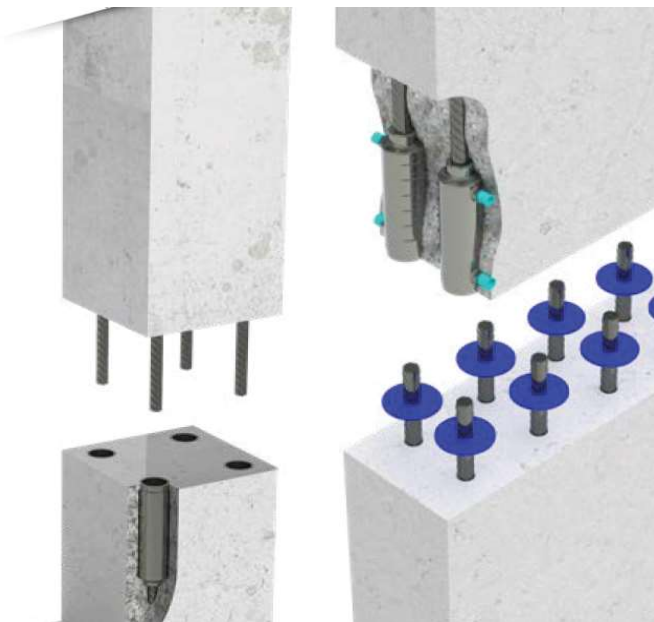
Groutec is designed to connect the precast elements either horizontally or vertically by positioning the rebar inside coupler.

Groutec can also be used to make a transition between rebar of different sizes. Please refer to our installation instructions for the list of possible combinations.

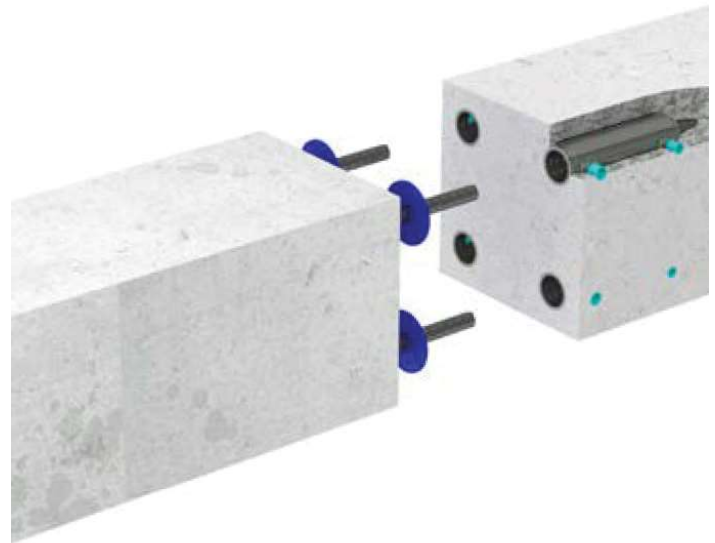
Easily connect two precast elements with no requirement for in situ wet concrete joint.



Groutec couplers are marked to trace raw materials and production batch data.



Use either direction for Vertical Connections, the Groutec sleeve installed in the bottom element, the grout can simply be poured by gravity directly into the sleeve cavity.



In horizontal applications and in vertical applications with the Groutec sleeve installed in the top element, the connection is achieved by injecting the grout through the inlet pipe.

SureBuilt
Concrete Forms & Accessories

840 South 25th Ave
Bellwood, IL 60104
708-493-9569
www.surebuilt-usa.com



Product Options

Part No.	Description
SBGSSF	Groutec Spice System Full

Groutec F

“F”, for Fully grouted, allows the connection of two rebars without the need of any threading procedure.

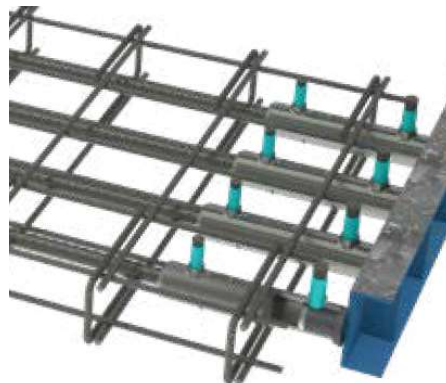


Groutec F
Fully grouted

Installation Sequence



1. Preposition Groutec onto the formwork using a positioner.



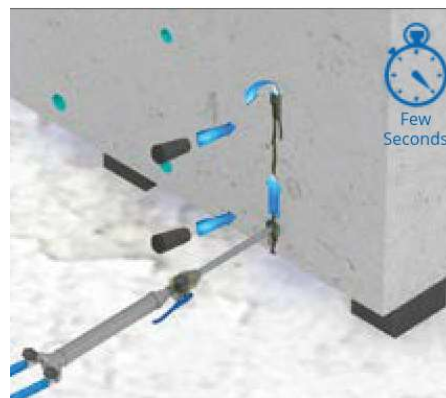
2. Install reinforcement.



3. Proceed with casting. Once ready, open the formwork. Remove plugs and positioners.



4. Transport element to its final position over the dowel bars, straighten and brace.



5. Inject non-shrink grout. Seal the coupler with plugs when grout overflows.



6. Bracing can be removed after drying time