

Flat Washers

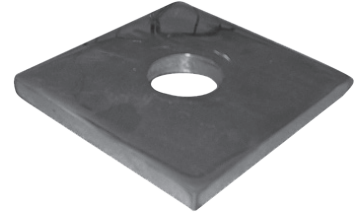
Transfer tie loads to the forming system with matching steel washers

Whether you call them Flat Washers, Plate Washers or Bearing Plates, we have all the washer sizes you need for concrete forming.

Flat Washers are used to transfer tie loads to form frames, walers and/or strongbacks. Just match the capacity of the tie, nut and washer.

There are Flat Washers suitable for coil rod, Euro rod, coil ties, taper ties, Euro ties and she-bolts.

There are some typical industry sizes, but other sizes are always available to match the forming situation.



Flat Washers*		
Part No.	Description	Load Rating**
SBFW1434916	Flat Washer 1/4"x3"x4" with 9/16" Hole	6,750 lbs
SBFW1444916	Flat Washer 1/4"x4"x4" with 9/16" Hole	6,750 lbs
SBFW1445916	Flat Washer 1/4"x4"x5" with 9/16" Hole	6,750 lbs
SBFW14451316	Flat Washer 1/4"x4"x5" with 13/16" Hole	6,750 lbs
SBFW38551316	Flat Washer 3/8"x5"x5" with 13/16" Hole	14,000 lbs
SBFW12551516	Flat Washer 1/2"x5"x5" with 1-1/16" Hole	18,500 lbs
SBFW12551516	Flat Washer 1/2"x5"x5" with 1-5/16" Hole	18,500 lbs
SBFW34551916	Flat Washer 3/4"x5"x5" with 1-9/16" Hole	30,000 lbs
SBFW34771116	Flat Washer 3/4"x7"x7" with 1-1/16" Hole	30,000 lbs
SBFW34771516	Flat Washer 3/4"x7"x7" with 1-5/16" Hole	30,000 lbs
SBFW34771916	Flat Washer 3/4"x7"x7" with 1-9/16" Hole	30,000 lbs

* Other sizes available on request.

** Safe Working Load (SWL) based on 2:1 safety factor for forming.