

Emergency Lift Plate

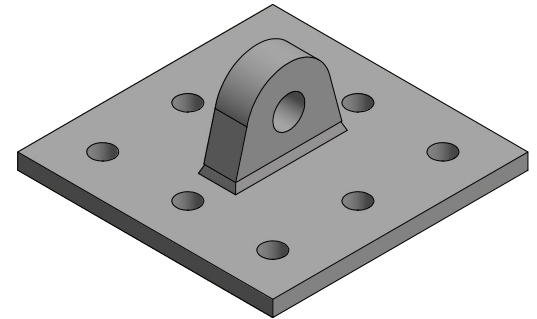
Precautionary method for lifting a tilt-up panel when inserts are improperly located or unusable

The Emergency Lift Plate is designed for situations when the original insert is improperly located or unusable. The plate is attached to the tilt-up panel using Titen HD Anchors 3/4"x6" (recommended) or equivalent. Refer to manufacturer instructions and load chart for proper anchor installation and capacity.

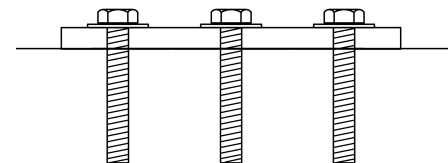
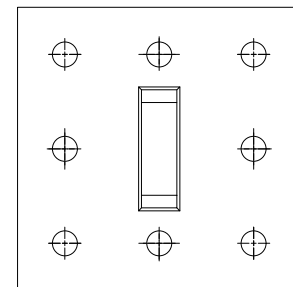
The Emergency Lift Plate should be installed over the original insert location or in alternate position designated by an experienced tilt-up professional. If uncertain about the location, contact the lift/brace engineer for further recommendations. Always be certain the Emergency Lift Plate is aligned with crane rigging cables.

The Emergency Lift Plate has a maximum safe working load (SWL) of 22,000 lbs. (at 5:1 safety factor) and should never be used in excess of that capacity.

When drilling holes for anchors, be careful not to inadvertently damage structural rebar in the tilt-up panel. Only the Engineer of Record (EOR) can approve deviations in the rebar design or integrity. Contact the lift/brace engineer if reinforcing or reconfiguration is needed for lifting purposes.



Emergency Lifting Plate



Emergency Lift Plate

*with recommended
Titen HD Anchor 3/4" X 6"
Safe working load is 6,845 lbs
(2:1 safety factor)*

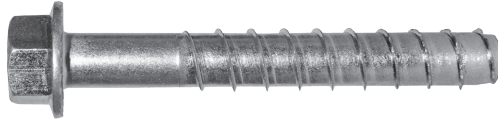
Emergency Lifting Plate		
Part No.	Description	SWL*
SBELP	Emergency Lifting Plate 12"x12"	22,000 lbs

* Safe Working Load (SWL) based on 5:1 safety factor.

Warning:

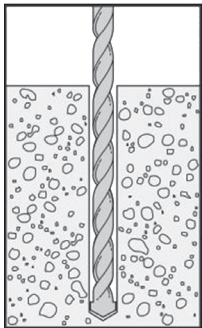
1. Concrete must have minimum 3,000 psi compressive strength.
2. Do not use the Titen HD Anchor in panels thinner than 7".
3. Edge distance must be minimum of 12" to center of holes.
4. Do not reuse Titen HD Anchor bolts.

A screw anchor is used to fasten the Emergency Lifting Plate to the tilt-up panel. The load-rated, Titen-brand screw anchor has a flanged head and unthreaded shaft, allowing for the thickness of the plate. Other brands are acceptable, but the bolts must be 3/4" diameter and the capacities must be confirmed with the manufacturer before installation.

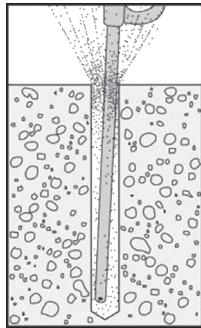


Titen HD Screw Anchor			
Part No.	Description	Slab	SWL*
SBTHD346G	Titen HD Anchor 3/4"x6" Galv	6"	7,500 lbs
SBTHD347G	Titen HD Anchor 3/4"x7" Galv	7"	9,000 lbs

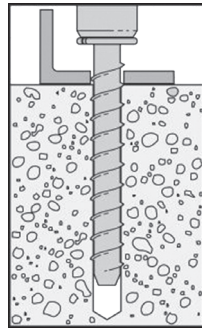
* Safe Working Load (SWL) using 2:1 safety factor in 3,000 psi concrete.



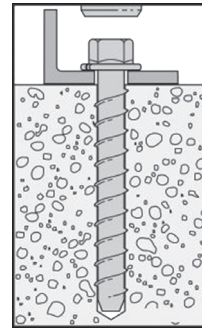
Drill hole



Clean hole



Torque bolt



Check fit

Installation:

1. Drill holes at 90° angle to the surface with a 3/4" carbide-tipped bit.
2. Drill a minimum of 5-3/4" deep for 6" anchor.
3. Clean the drilled holes with compressed air or blow-out bulb.
4. Only use new Anchors with clean and undamaged threads.
5. Place Brace Shoe over the hole and position anchor.
6. Securely tighten anchor using a 3/4" impact wrench to 100 ft-lbs.
7. Use 3/4" F436 Structural Washer where needed.