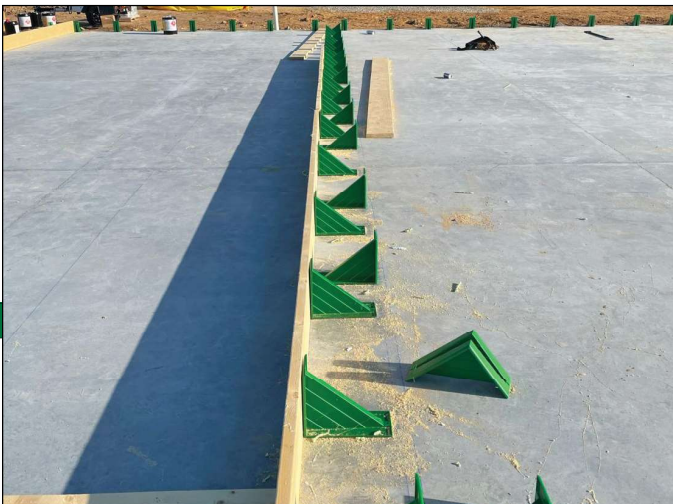




## Edge Form Brackets



## Edge Form Bracket 6x8, 9x11

### Reuse instead of cutting lumber blocks for bracing and start forming faster

The one-piece plastic design is a wedge-shape that braces tilt-up edge forms. The 6x8 Edge Form Bracket has a 6" side for slabs 6" to 7", and an 8" side for slabs 8" to 9". The 9x11 Edge Form Bracket has a 9" side for slabs 9" to 11", and a 11" side for slabs 11" to 13".

Both sides of the Edge Form Bracket have a flat surface with holes for attachment .

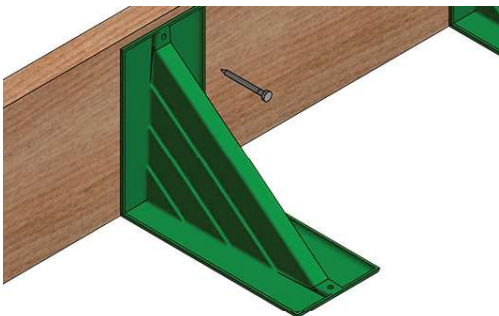
The top of the Edge Form Brackets should always be positioned below the overall form height so they do not interfere with concrete screeding or finishing.

Edge Form Bracket 9x11	
Part No.	Description
SBEFX9X11	Edge Form Bracket 9"x11"
SBEFG6X8	Edge Form Bracket 6"x8"

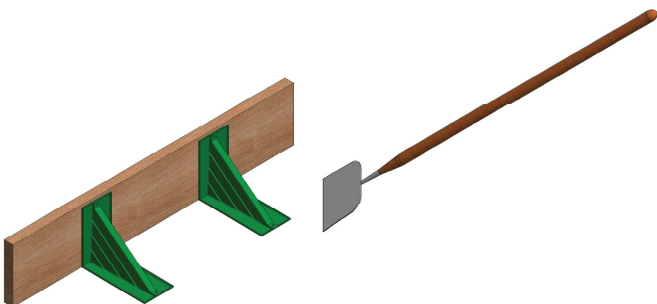


*The 9x11 Edge Form Bracket can be nailed, screwed or glued to lumber and concrete. The brackets can be stripped, stacked, saved and reused.*

**Tack It** - Edge Form Brackets\* have sides with holes for nail attachment to lumber and concrete. 1/4"x1" plastic nails are available.



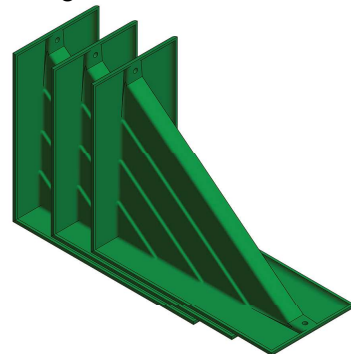
**Scrape It** - Edge Form Brackets can be removed from surfaces with a long-handle scraper and cleaned.



**Stick It** - Edge Form Brackets have flat sides for Spray Adhesive or All Weather Adhesive attachment.



**Stack It** - Edge Form Brackets "nest" together for handling and storage.



**Construction Adhesive**

**Position, bond, and remove materials in tilt-up casting beds**

**Construction Adhesive**

A high-strength, fast-drying, low VOC, pressure-sensitive adhesive used for positioning chamfers, reveals and rustications in tilt-up casting beds. Suitable for concrete, metal, plastic and wood surfaces.

**All Weather Adhesive**

A one-part, moisture cure that can be used in both wet and dry conditions to adhere a variety of substrates. The high strength bond is flexible and can provide sealant properties. Its high initial green strength and non-slump formula is ideal for both vertical and horizontal applications. Cure time can be 24 hours or more, depending on the environment.



*Construction Adhesive Edge Form Bracket Installation*

Adhesives		
Part No.	Description	Packaging
SBFCA14	Construction Adhesive - LVOC Inverted Aerosol Spray - 14oz can	12/case, 108 cases/pallet
SBFAWA20	All-Weather Adhesive - 20 oz sausage - 100% solids	12/case, 45 cases/pallet
SBFCA28	Construction Adhesive - Canister Tank Spray - 28 lbs	36/pallet



*Construction Adhesive  
aerosol can*



*All Weather Adhesive - sausage*



*Construction Adhesive  
canister*



Adhesive Cleaner & Accessories		
Part No.	Description	Packaging
SBFAC5	Adhesive Cleaner - 5 gallon pail	36/pallet
SBFCGAF	Canister Gun w/Adjustable Flow	-
SBFCH12	Canister Hose - 12' Length	-
SBCGNB620AL	Caulking Gun for 20oz sausage, bulk, cartridge	-



*Canister Gun with Adjustable Flow Rate*



*Caulking Gun for 20 oz, Sausage, Bulk, Cartridge*

### Adhesive Cleaner

Adhesive Cleaner was designed to help clean up adhesive residue.

The solvent system attacks residue and can be applied with a sponge and applicator.

Adhesive Cleaner is great for removing common aerosol adhesives used in tilt-up construction.

Bondbreakers that chemically react with the concrete slab and bondbreakers containing wax will require physical abrasion to prep an area.

Site test recommended.



## Construction Adhesive Guidelines

### 1. Use a curing chemical or curing process that is compatible with the Construction Adhesive

Use of bondbreakers or curing compounds containing wax will make bonding to the concrete slab more difficult. Chemicals that aid in curing, meet ASTM C 309 on a steel troweled surface, and do not affect adhesion such as SureBuilt SureCure should be considered. Consult with SureBuilt Tilt-Up Engineering for more information. Site test recommended.

### 2. Allow sufficient concrete curing

Allow a minimum of three curing days (seven days preferred) after placing a concrete slab. Check for residual moisture before applying adhesive to a newly-placed concrete surface.

### 3. Carefully prepare the surface

Bonding surfaces (concrete, metals, plastics, wood) must be free of oil, dirt, dust and/or other particles. Use a hard bristle brush/broom to clean the surfaces. When necessary, use an angle grinder with a wire cup brush or Adhesive Cleaner. Note: use of bondbreaker or any cure with wax will inhibit bonding performance of Construction Adhesive.

### 4. Spray adhesive in a consistent pattern

Applicator tip should be approximately 10 inches from the surface. Constantly move the applicator to minimize overlap and/or over application. Several light spray applications typically provide more consistent and thorough coverage.

### 5. Provide adequate flash time

Adhesive should be applied to both surfaces, then allowed to “flash off” before matching and bonding those surfaces. Flash time is approximately 1-3 minutes depending on the ambient temperature and weather conditions.

### 6. Let adhesive dry

Adhesive should be dry to the touch on both surfaces before matching and bonding those surfaces. The adhesive can remain “tacky,” even when it is dry.

### 7. Apply even pressure to materials

Match treated surfaces and apply heavy, consistent pressure. When bonding longer lengths of materials, be sure they are positioned straight and flat. When bonding longer lengths of materials, be sure to allow approximately 1/16” space for expansion.

### 8. Check the base

Force from nail guns and/or other power tools can disrupt bonded materials. Allow bonded areas to fully cure before performing other forming operations. Use instant-bond Sticky Sheets to reattach dislodged materials.

### 8. Water resistance

For reveals and rustications, use impervious materials like plastics. Check adhesive and plastic compatibility before beginning any application. Do not attempt to match and bond wet materials. Incidental moisture after installation is acceptable.

## Line Card



### Bar Support \*

Slab Bolster  
Slab Bolster Upper  
Individual High Chair  
Continuous High Chair  
Continuous High Chair Upper  
Beam Bolster

### Bridge Deck Forming

Bridge Overhang Bracket \*  
Curing Blankets  
Exterior Hangers \*  
Exterior Half Hangers \*  
Interior Hangers \*  
Interior Half Hanger \*  
Adjustable Joist Hanger

### Coil Rod \*

1/2", 3/4", 1" Coil Rod  
1-1/4" Coil Rod  
15mm, 20mm Coil Rod

### Coil Ties \*

1/2", 3/4", 1" Coil Ties  
1-1/4" Coil Ties

### Concrete Hoppers

Hoppers  
Elephant Trunk  
Tremie Pipe  
Steel Collar

### Floor Systems \*

Dowel Basket  
Taper Dowel  
Steel Edge Nosing  
VaporStop & Tape

### Form Liners \*

HIPS - Single Use  
ABS - Up to 10 Uses  
PE - Up to 40 - 50 Uses  
PPE - Up to 100+ Uses

### Form Ties \*

HD Loop Ties  
HD Gang Loop Ties

### Form Ties \*

X-Flat Ties  
Base Ties  
Aluminum Form Ties

### Heavy Forming \*

SOLO Clamp Form 1500PSF  
SureCurve Radius Form  
Sure Beam  
Articulated Waler  
Steel Circular Column Form  
Taper Ties  
She-Bolts  
Inner Units  
Euro Taper Ties  
Euro She-Bolts  
Flat Washers

### GFRP Reinforcement Bar \*

#2-#11 Reinforcement Bar

### Metal Rib \*

Expanded Metal Mesh

### Modular Braces \*

Type 6-5/8"  
Type 8-5/8"

### Pipe Braces \*

### Plywood Forming \*

Coil Ties  
Pencil Rod and Clamps  
Self-Centering Ties  
Snap Ties

### Precast

Anchor Rail HD  
Coil Inserts \*  
Column Wall Edge Connector \*  
Ferrule Inserts \*  
Helical Ground Anchors \*  
Ring and Cable Lifters  
Slant Anchor \*  
Straight Leg Anchor \*  
Wall Base Connector \*  
Wire / FRP Truss \*

### Rebar Safety Caps

### Rebar Splicing \*

Groutec  
Unitec

### Self-Riser System \*

### Shoring \*

Cross Braces  
Frames  
Post Shores  
Screw Jacks

### Snap Ties \*

### SPAN-X Beams \*

### Staybox Rebar Splicing \*

### Steel Stakes \*

3/4" Stakes  
7/8" Stakes

### Stud Rail DSA & DSAR \*

Thermal Break

### SurePly™ Handset Forming \*

Panels and Fillers  
Hardware  
HD Loop Ties  
X-Flat Ties  
Birch Plywood

### Tilt-Up

Brace Inserts \*  
Helical Ground Anchors \*  
Lifting Hardware  
ProLift Inserts \*  
Slant Anchor \*  
SureLift (SL) Inserts \*  
Edge Form Brackets  
Construction Adhesive \*  
FRP Truss / Connectors \*  
XL Lift Inserts \*

### Walers \*

Butt Plate  
Double Channel

\* Products are Made in the USA or available to be made in the USA

**SureBuilt**  
Concrete Forms & Accessories

2525 Armitage Ave  
Melrose Park, IL 60160  
708-493-9569  
[www.surebuilt-usa.com](http://www.surebuilt-usa.com)

