

ECO Dowel Basket

Tapered dowel assembly for efficient load transfer in concrete floor and pavement joints

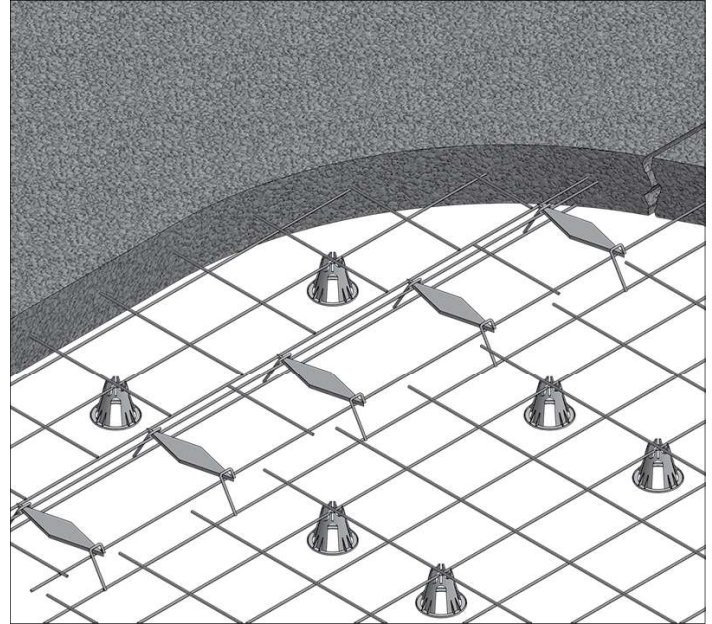
The ECO Dowel Basket provides joint stability, reliable load transfer and smooth slab-to-slab transition, in a single cost-effective assembly.

A properly installed ECO Dowel Basket minimizes joint spalling.

The diamond-shaped steel plate allows axial and lateral movement, provides bearing capacity, and prevents slab interlock and cracking, assuring a high quality concrete slab.

A properly installed ECO Dowel Basket is designed for joints up to 0.20" wide and is suitable for all types of ground level concrete slabs, such as jointed floors, flatwork and pavement.

An ECO Dowel Basket conforms to ACI 302.1R Guide for Concrete Floor and Slab Construction and ACI 360 Design of Slabs-on-Ground.



The labor-saving ECO Dowel Basket is placed as a single unit at every planned concrete joint, along with typical chairs and reinforcement.

ECO Dowel Basket				
Part No.	Description (height x length)	Slab	Plate Size	Spacing*
SBEDB638S18	ECO Dowel Basket 3" x 12'	6"	3/8" x 3" x 12"	18" OC
SBEDB738S24	ECO Dowel Basket 3-1/2" x 12'	7"	3/8" x 3" x 12"	24" OC
SBEDB712S18	ECO Dowel Basket 3-1/2" x 12'	7"	1/2" x 3" x 12"	18" OC
SBEDB812S24	ECO Dowel Basket 4" x 12'	8"	1/2" x 3" x 12"	24" OC
SBEDB934S18	ECO Dowel Basket 4-1/2" x 12'	9"	3/4" x 3" x 12"	18" OC
SBEDB1034S24	ECO Dowel Basket 5" x 12'	10"	3/4" x 3" x 12"	24" OC
SBEDBDA	ECO Debond - 5 Gal Pail	Coats tapered dowel for movement within slab		

* Spacing shown based on ACI 360 Design of Slabs-on-Ground.

* Additional spacing specifications available on request.

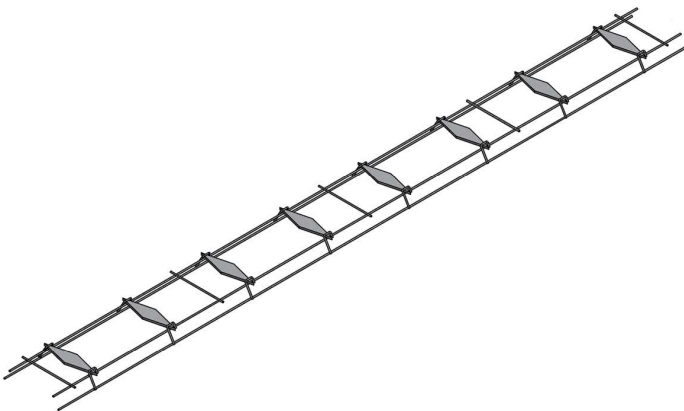
SureBuilt
Concrete Forms & Accessories

840 South 25th Ave
Bellwood, IL 60104
708-493-9569
www.surebuilt-usa.com

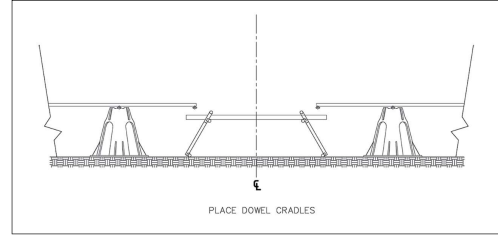


ECO Dowel Basket Installation

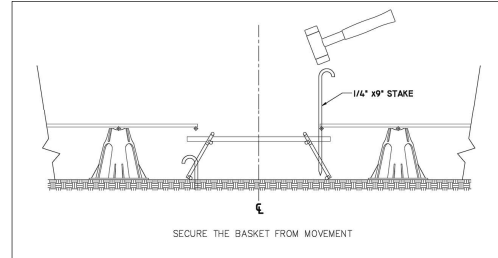
1. ECO Dowel Baskets are supplied with ECO Debond agent.
2. Each ECO Dowel Basket should remain parallel in the horizontal plane during concrete placing and finishing operations.
3. Tapered dowels should not be closer than 12" to the intersection of any joint. Adjust basket position to avoid this condition.
4. Anchor basket with stake or concrete mud to prevent movement during pour. Position and tie the slab reinforcement. Optional: Cut shipping wires at midpoint to reduce restraining forces at contraction joint.
5. Place concrete, completely surrounding each ECO Dowel Basket location. Use vibration to consolidate concrete, but do not strike or damage the assembly.
6. When concrete has been finished and reaches sufficient strength, saw cut the joint along the line of each ECO Dowel Basket location.



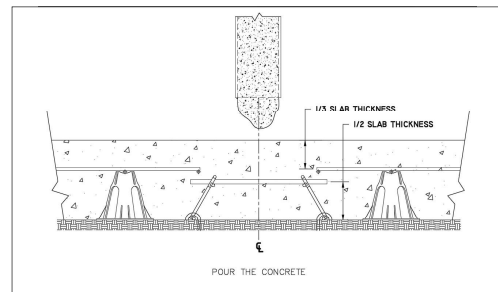
ECO Dowel Basket height is typically the midpoint of the slab. Basket length is typically 12', but can be cut-to-size. Plates can be 3/8" or 1/2" or 3/4" depending on project requirements, anticipated loads and slab thickness.



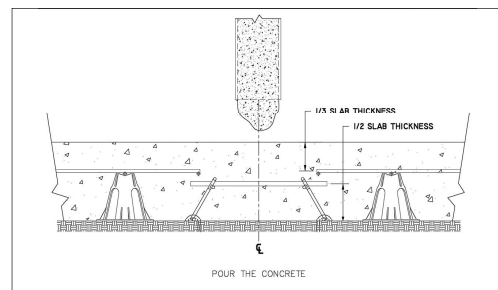
Place basket at each joint.



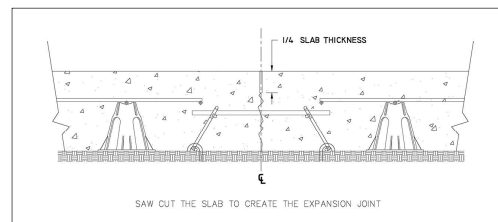
Anchor basket with stake.



Optional: Cut the spacing / shipping wires.



Pour and consolidate concrete.



Saw cut concrete at joint location.