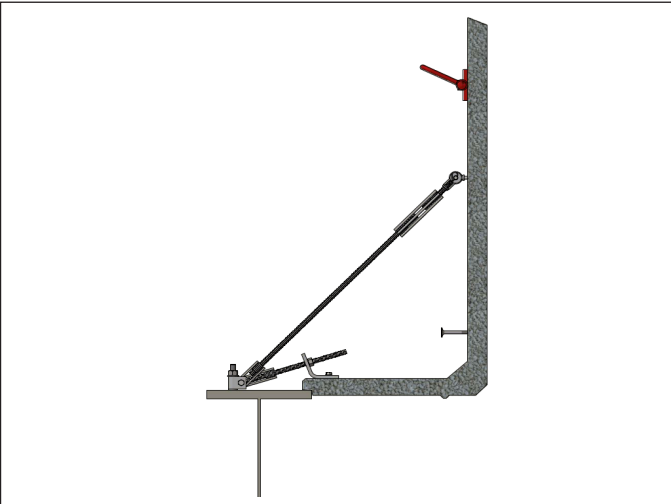


Bridge Precast Overhang System

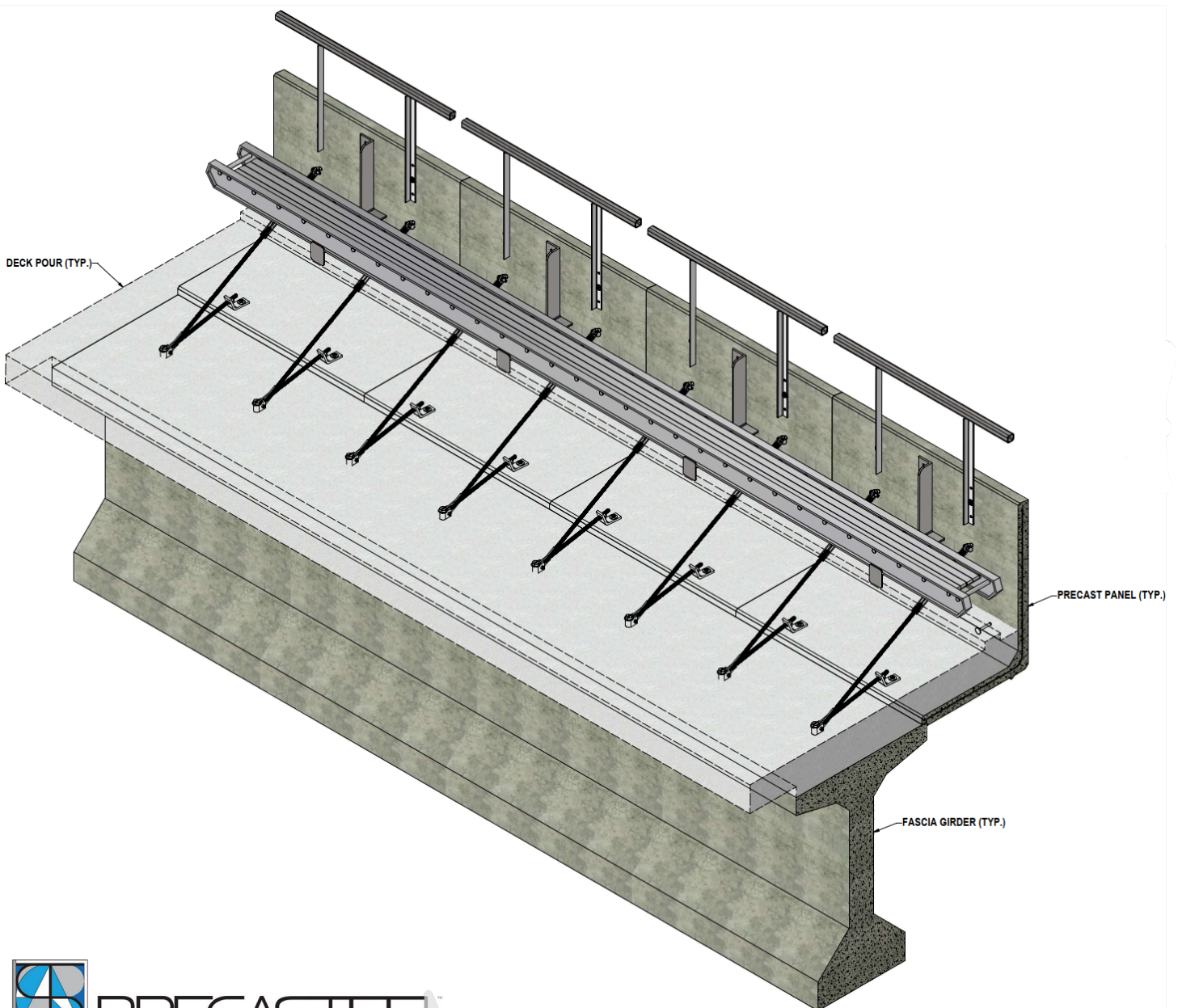


Precast Overhang System / Stay-In-Place Fascia Form (SIPFF)

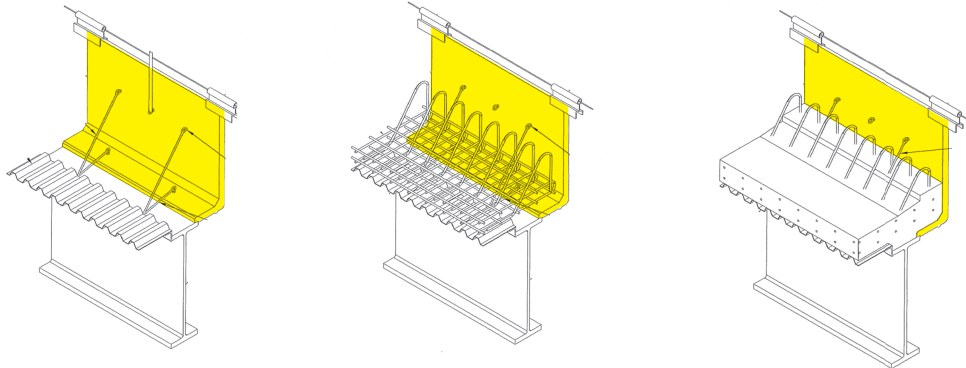
SureBuilt, together with its partner, Precasteel, has combined the best in design and manufacturing, with extensive industry experience, to create an effective, efficient and safe precast overhang system to meet the demand for bridge construction.

Today, more than ever, innovations that shorten construction schedules and reduce laborious product installations are gaining momentum.

The Precast Overhang System is designed to load the girder flange equally and thus reduce damages that can occur to the flange during bridge deck placement.



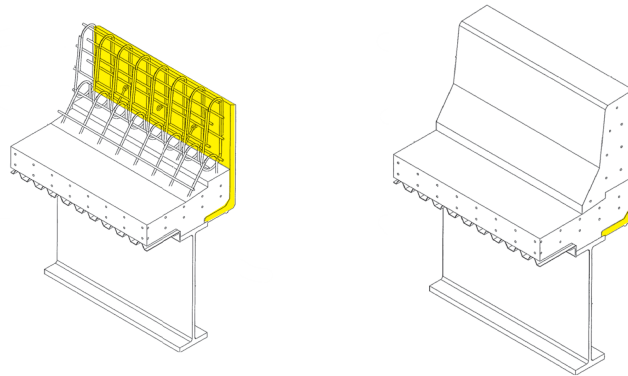
Sequence for Precast Overhang System / Stay-In-Place Fascia Form (SIPFF)



1. Install SIPFF

2. Install Deck Reinforcement

3. Pour Deck



4. Install Barrier Reinforcement

5. Pour Barrier or Slip Form

To Use Stay-in-Place Fascia Form

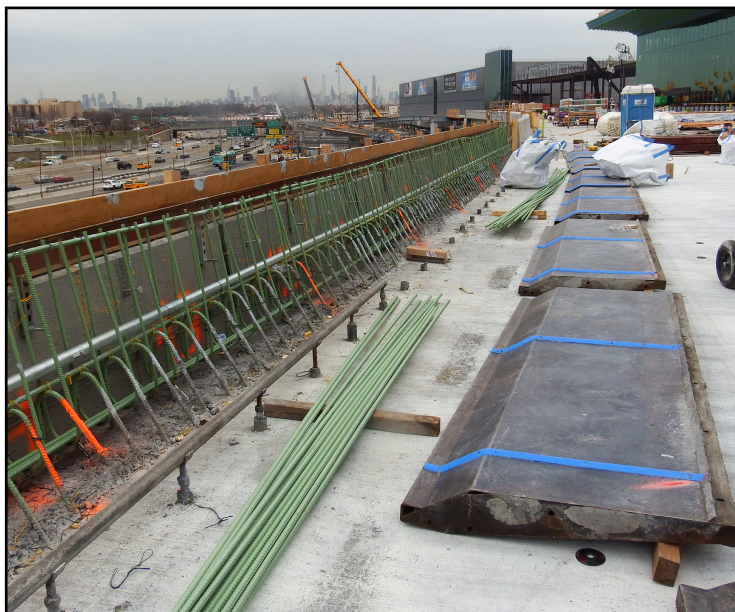
1. Stay-in-Place Fascia Forms (SIPFF) are typically considered a means & methods provided the inside face of the SIPFF is held to the outside face of the proposed barrier line.
2. The contractor is responsible for all means & methods and should propose the use of SIPFFs early in the project to allow sufficient time for review and acceptance by the owners representative to avoid delays in the overall project schedule.
3. Standard SIPFFs can be used on both steel & concrete fascia girders in most cases.
4. Standard SIPFFs come in three (3) types, ranging from 0" to 36" soffit widths.
5. Go to www.precasteel.com to view & request submittal packages for standard panel types; custom panel design services are available upon request.

Precast Overhang System / Stay-In-Place Fascia Form (SIPFF)

- Reduce skilled labor needed to set bridge overhang and eliminate cost associated with removals.
- Beam flange is loaded evenly, and no horizontal loads on web of fascia beam.
- Accelerate bridge construction, one 5' SIPFF can be set in 5 minutes or less.



This SIPFF is designed to prevent any issues with web buckling and any damages that can occur to flange from conventional exterior overhang systems, and all work can be performed from the top side.



Primary ties can be removed once deck concrete is cured sufficiently; railing can be removed once barrier steel reinforcement is installed to the proper height above deck.



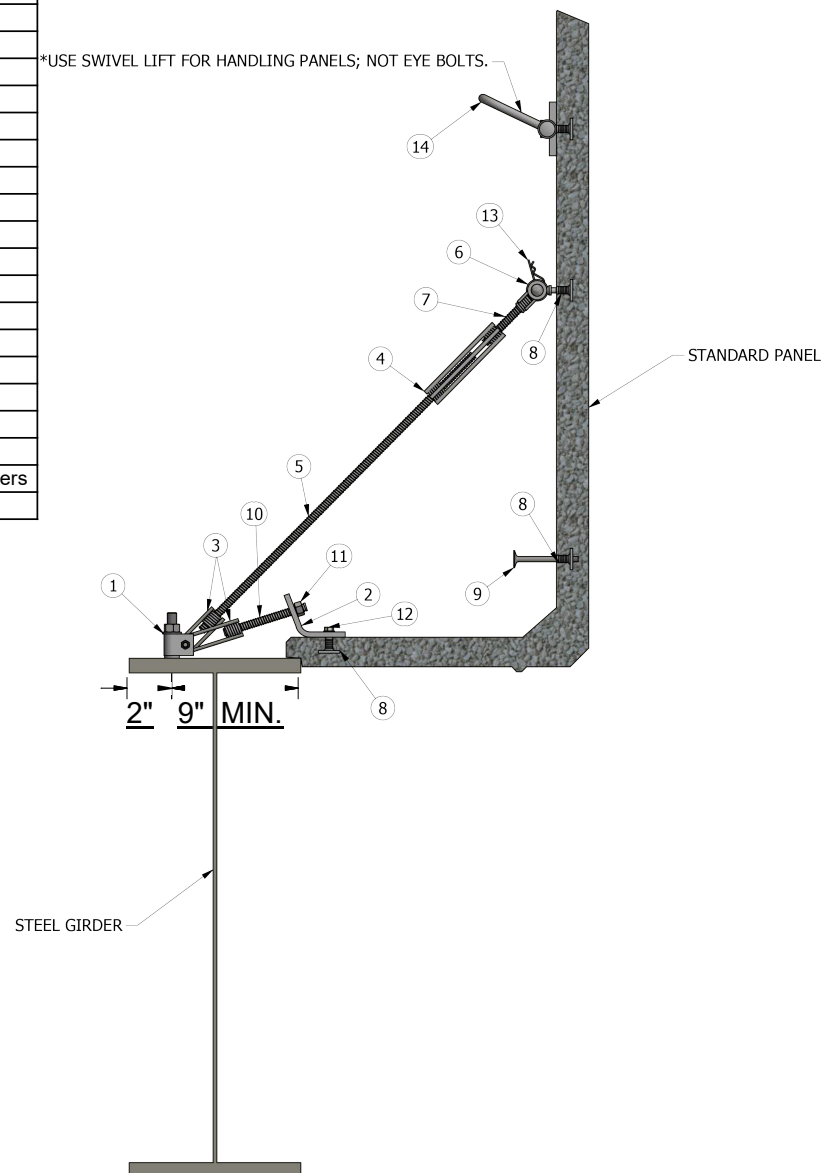
Shop control concrete is less permeable than CIP concrete, resulting in longer service life, and improved aesthetics.

Steel Girder Application

- No bracing against the web, overhang loads are distributed along the top of the girder.
- No need for access or lifts from underneath, all construction activities are accessible from the top.
- No formwork failure, coil rod strut resists uplift during concrete placement and any wind loads.
- No quality issues regarding lumber rails or bracing, overhang is safer and eliminates form disposal.
- No returns for rubbing out concrete girders or touch-up painting steel girders.
- Integrated and less permeable concrete surface provides longer service life.

Less labor-intensive... more cost-effective!

SIPFF Steel Girder Hardware		
Item	Part No.	Description
1	SB78USTRAPG	U Strap wBolt and Nut
2	SB382CAP2HG	Bent Plate
3	SBCL1344G	Coil Loop 3/4"x4"
3	SBCL1346G	Coil Loop 3/4"x6"
4	SB4SC349LR	Coil Tie 3/4"x9" 4-Strut RH/LH
5	SBCR3418	Coil Rod 3/4"x18"
5	SBCR3422	Coil Rod 3/4"x22"
5	SBCR3436	Coil Rod 3/4"x36"
6	SBSEB121	Eyebolt 1/2"x1" wShoulder
6	SBSEB12114	Eyebolt 1/2"x1-1/4" wShoulder
7	SB2LCR346LH	Coil Rod 3/4"x6" LH wDouble Loops
8	SB12NCx114PAG	Ferrule Anchor 1/2"x 1-1/4"
8	SB12NCx112PAG	Ferrule Anchor 1/2"x 1-1/2"
9	SBNCF1125G	DSA 1/2" x 5"
10	SBCR3412G	Coil Rod 3/4"x12"
11	SBCN34G	Coil Nut 3/4"
12	SBNCB114G	NC Bolt 1/2"x1-1/4"
13	SB58HP	Hitchpin 5/8"x2" wLock Clip and 2 washers
14	SBSLP12	Swivel Lift 1/2"

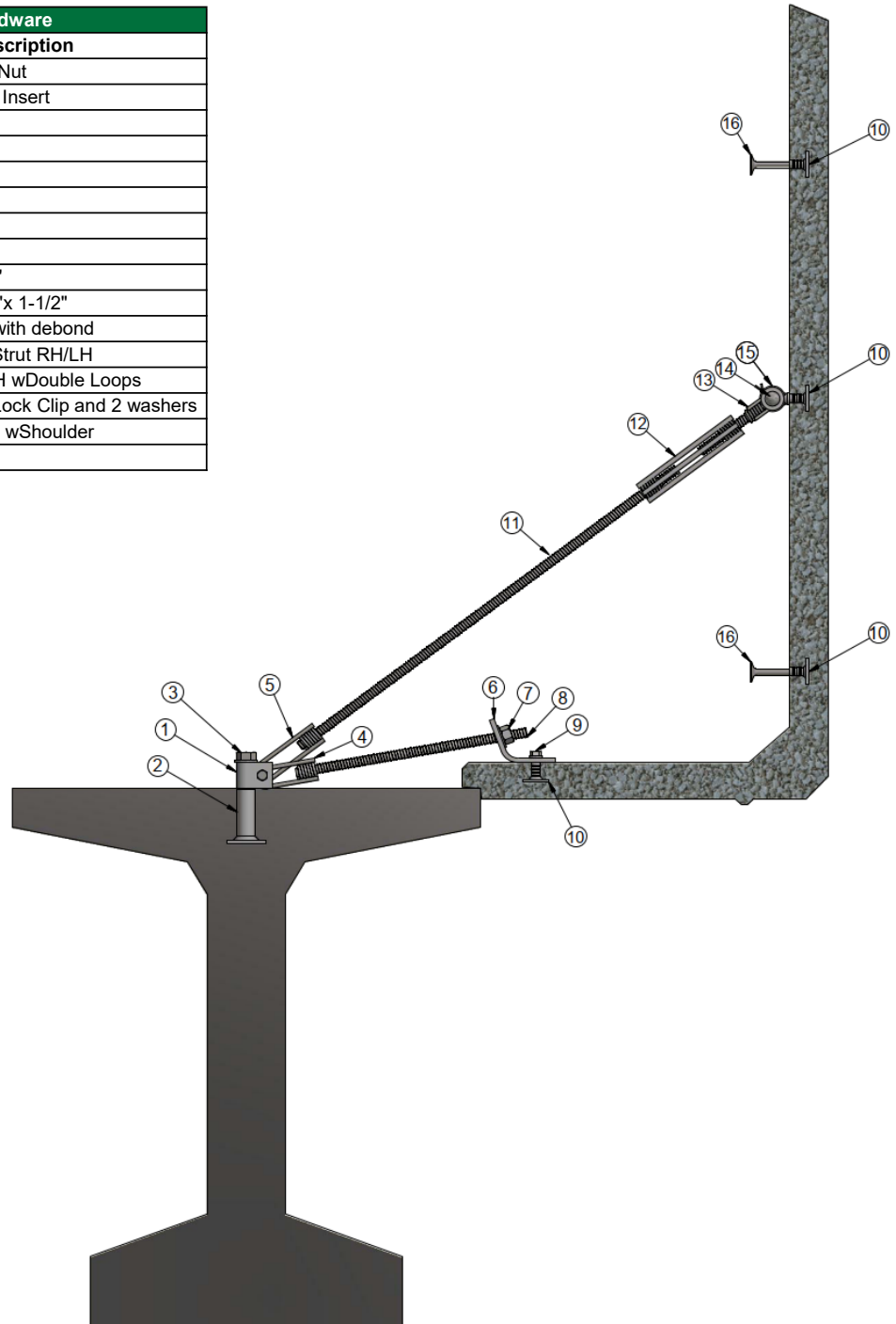


A partnership between PRECASTEEL (www.precaststeel.com) and SureBuilt (www.surebuilt-usa.com).

Concrete Girder Application

- ◆ No bracing against the web, overhang loads are distributed across the top of the girder.
- ◆ No need for access or lifts from underneath, all construction activities are accessible from the top.
- ◆ No formwork failure, coil rod strut resists uplift during concrete placement and any wind loads.
- ◆ No quality issues regarding lumber rails or bracing, overhang is safer and eliminates form disposal.
- ◆ No returns for rubbing out concrete girders or touch-up painting steel girders.
- ◆ Integrated and less permeable concrete surface provides longer service life.

SIPFF Concrete Girder Hardware		
Item	Part No.	Description
1	SB78USTRAPG	U Strap wBolt and Nut
2	SBPBI78G	7/8" Precast Beam Insert
3	SB78BLT412	7/8" Bolt x 4-1/2"
4	SBCL1344G	Coil Loop 3/4"x4"
5	SBCL1346G	Coil Loop 3/4"x6"
6	SB382CAP2HG	Bent Plate
7	SBCN34G	Coil Nut 3/4"
8	SBCR3418	Coil Rod 3/4"x18"
9	SBNCB114G	NC Bolt 1/2"x1-1/4"
10	SB12NCx112PAG	Ferrule Anchor 1/2"x 1-1/2"
11	SBCR3436	Coil Rod 3/4"x36" with debond
12	SB4SC349LR	Coil Tie 3/4"x9" 4-Strut RH/LH
13	SB2LCR346LH	Coil Rod 3/4"x6" LH wDouble Loops
14	SB58HP	Hitchpin 5/8"x2" wLock Clip and 2 washers
15	SBSEB12114	Eyebolt 1/2"x1-1/4" wShoulder
16	SBNCF1125G	DSA 1/2" x 5"



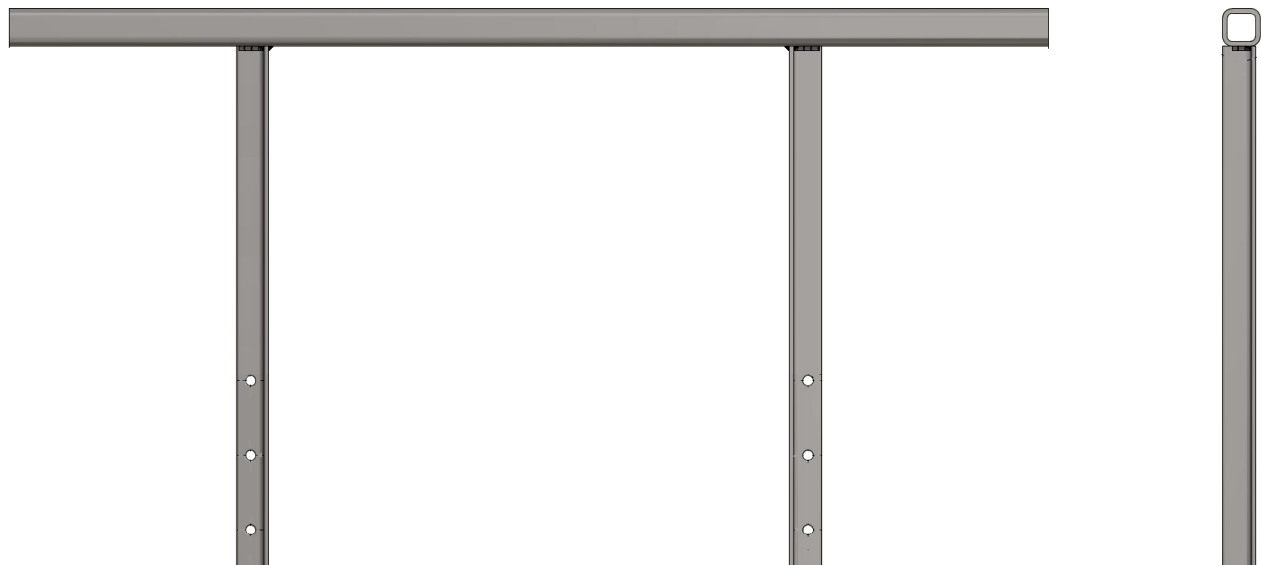
L-Shape Pick Support / Walkway Bracket

This Bracket also allows for use of up to 16" wide walkway planks to transverse the concrete paver machine.



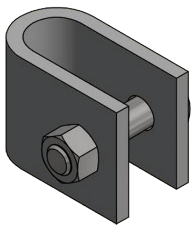
Steel Railing

Steel Railing is used with L-Shape Walkway Bracket to improve safety barrier on SIPFF.

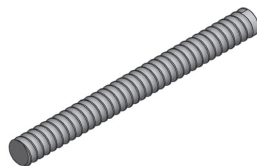


Hardware Guide

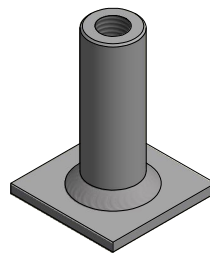
Components provided exclusively by SureBuilt... www.surebuilt-usa.com



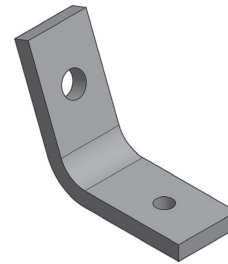
U-STRAP wBOLT-NUT
(SB78USTRAPG)



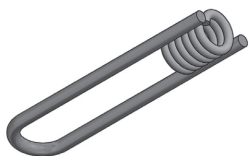
COIL ROD 3/4"x12" R/H (SBCR3412G)
COIL ROD 3/4"x24" R/H (SBCR3424G)
COIL ROD 3/4"x36" R/H (SBCR3436G)



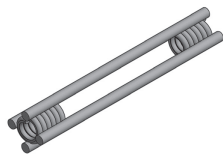
PRECAST BEAM INSERT
(SBPBI78G)



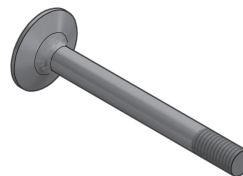
BENT PLATE
(SB122CAP2HG)



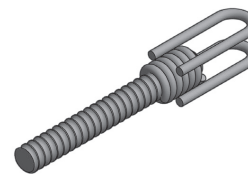
COIL LOOP INSERT 3/4"x4" (SBCLI344G)
COIL LOOP INSERT 3/4"x6" (SBCLI346G)



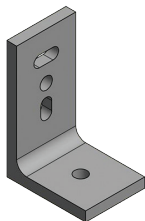
COIL TIE 3/4"x9"
4-STRUT R/L
(SB4SC349LR)



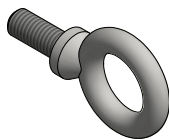
SINGLE STUD ANCHOR 1/2"x5"
(SBNCF125G)



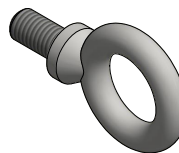
COIL ROD 3/4"x6" (SB2LCR346LH)
W/DOUBLE LOOP L/H



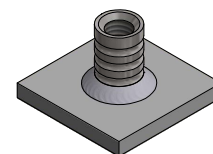
TIE BASE ANGLE W/3 HOLES
1/2"x3"x6" GLV
(SBBTA3X6G)



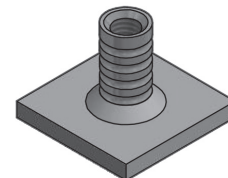
FORGED EYEBOLT W/SHOULDER
(SBSEB12114)



FORGED EYEBOLT W/SHOULDER
(SBSEB121)



1/2" x 1" FERRULE ANCHOR
(SB12NCX114PAG)



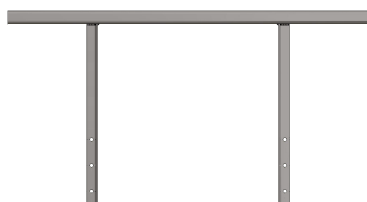
1/2" x 1-1/4" FERRULE ANCHOR
(SB12NCX112PAG)



3/4" COIL NUT
(SBCN34G)



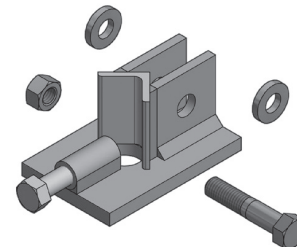
5/8"x2" HITCHPIN
W/LOCK CLIP AND
2 WASHERS
(SB58HP)



STEEL RAILING
(SBSTLRAIL)



PICK SUPPORT BRACKET
(SBLSPSB)



REBAR CLAMP BRACKET
(SBRCB#6G)