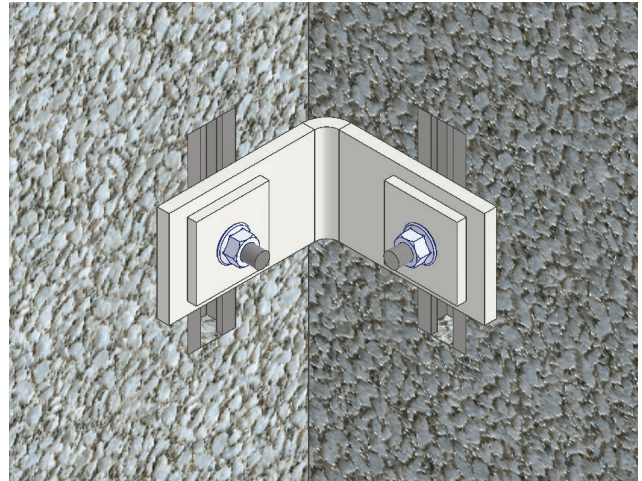


Bolted Corner Connection

Bolted, corner connection for concrete wall panels

The Bolted Corner Connection was specifically designed and engineered to eliminate welding operations for panel-to-panel connections. This simplified method allows for installation by crew members already working onsite. This reduces costs and time consuming inspection procedures required with weld plates and field welding. Installation can be completed when weather is not suitable for welding.

Bolted Corner Connections are adjustable which allows greater flexibility when there are inconsistencies in foundation elevations. Only a torque wrench is required for installation.

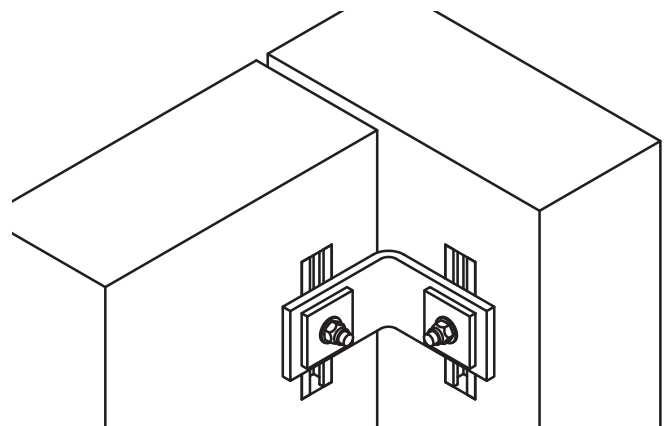


Bolted Corner Connection

*Bolted Connection			
Part No.	Description	Components	Qty
SBBCCK	**Bolted Corner Connection Kit	Anchor Rail HD	2
		Serrated Hex Flange Nut	2
		M16 T-Bolt 8.8	2
		Square Washers 3"x3"x3/8"	2
		Panel-to-Panel Connection Plate	1

* Minimum wall panel thickness for SBBPTPC is 4".

** All materials are HDG

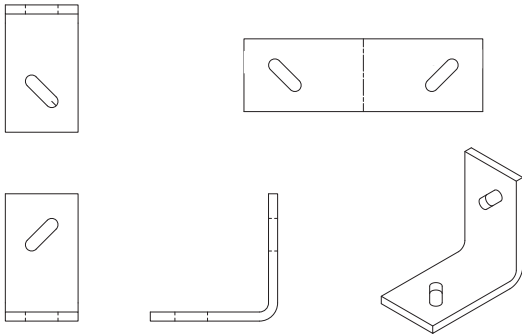


SureBuilt
Concrete Forms & Accessories

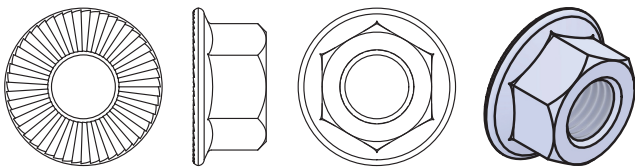
2525 Armitage Ave
Melrose Park, IL 60160
708-493-9569
www.surebuilt-usa.com



Corner Connection Plate



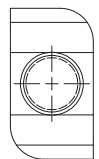
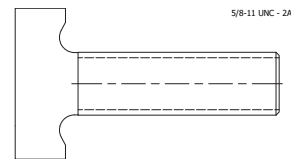
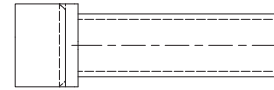
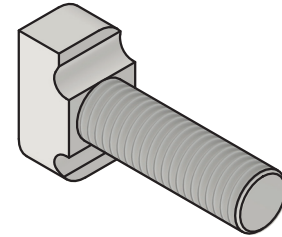
Serrated Hex Flange Nut



*The serrated flange resists loosening due to vibration.

T-Bolt and Serrated Flange Nut		
Part No.	Description	Size
SBM16TBOLT88	T-Bolt 8.8	M16
SBSHFN	Serrated Hex Flange Nut	M16

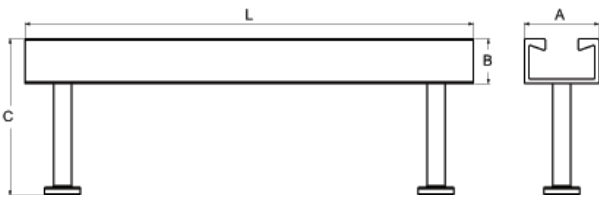
T-Bolt



*Insert the T-Bolt into the Anchor Rail HD channel slot. After a 90° turn clockwise the T-Bolt locks into position.

**SureBuilt T-Bolts only work with SureBuilt Anchor Rail HD.*

Anchor Rail HD



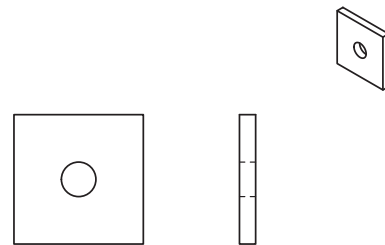
Anchor Rail HD - Dimensions				
Part No.	A	B	C	L
SBARHD8G	2"	1-1/4"	5-1/4"	8"

Anchor Rail HD - Properties		
Load	Capacity	SWL*
Pull-Out	11,250 lbs	3,750 lbs
Shear	5,500 lbs	1,833 lbs

* Safe Working Load based on a safety factor of 3:1.

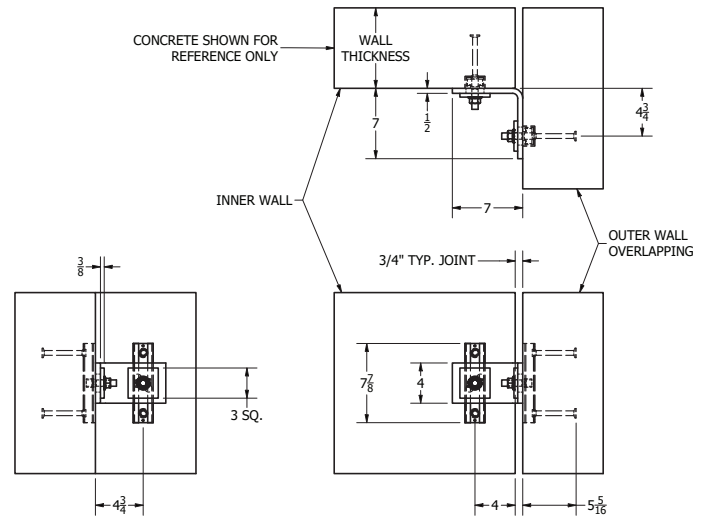
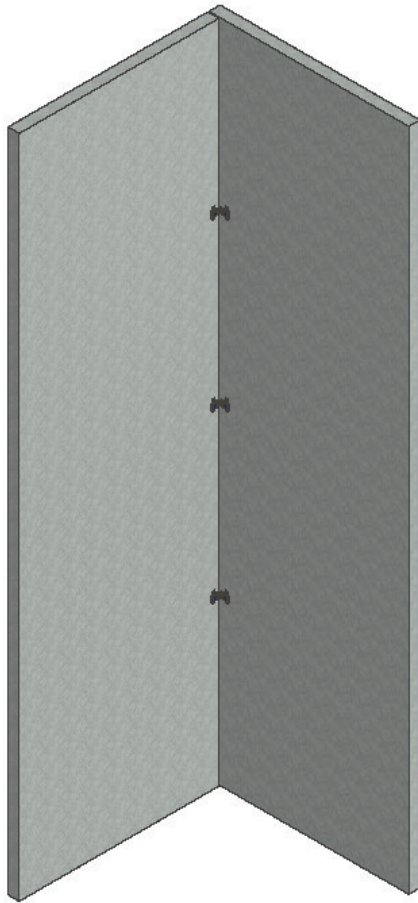
** Additional reinforcement required when rail placed close to edges or openings.

Structural Washer



Round washers available upon request.

Bolted Corner Connection



Engineer of Record to specify number of connections per corner joint and maximum connection spacing.

Bolted Corner Connection Notes

1. Out-of-plane loads are assumed to act on one side of corner at any point in time.
2. Anchor Channel allows for +/- 2" up/down tolerance.
3. Each side of bracket allows for +/- 1" left/right tolerance.
4. T-Bolt must be installed between the end anchors.
5. Place plate and washer and tighten nut to 52 lbf-ft. Exceeding capacity may damage the connections.
6. After tightening the nut, check whether the T-Bolt for correct installation. If the T-Bolt head is not perpendicular to the channel axis, the T-Bolt must be completely loosened, re-aligned, re-tightened, and then re-checked for correct installation.