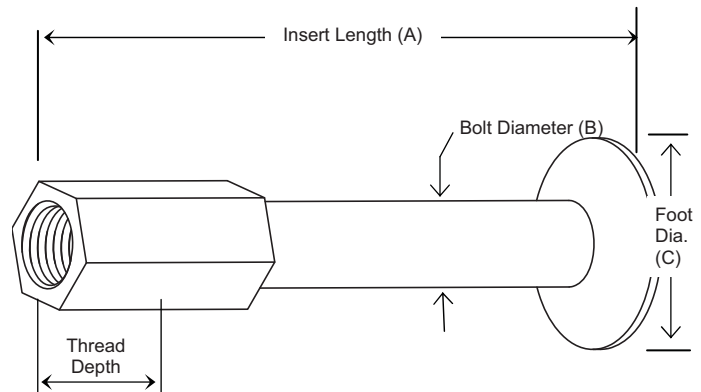


DUCTILE INSERTS

- Designed to give additional load strength in concrete
- Anchors can be used for lifting/handling or fixing and mounting for structural purpose
- Ductile Insert components like couplers, bolts or nuts can be supplied in round or hex version
- Use with SureBuilt double lifting plate for maximum capacity
- Available in coil or NC threaded, hex foot or forged foot

The large foot creates a large shear cone in concrete.



DUCTILE INSERTS						
BOLT DIAMETER (B)	INSERT LENGTH (A)	MIN. ULTIMATE STRENGTH IN 3500 PSI CONCRETE	MIN. FOOT DIA. (C)	THREAD DEPTH	MINIMUM EDGE DISTANCE	PART NUMBER
in.	in.	lb	in.	in.	in.	#
1/2 NC	5.00	18,000	1	7/8	8	SBDFI125
5/8 NC	6.00	24,000	1-1/4	1	10	SBDFI586
3/4 NC	7.00	34,600	1-1/2	1-1/4	12	SBDFI347
7/8 NC	7.50	43,000	1-3/4	1-3/8	15	SBDFI78712
1 NC	8.00	59,000	2	1-1/2	16	SBDFI18
1-1/8	10.00	75,500	2-1/4	1-3/4	20	SBDFI11810
1-1/4	12.00	96,000	2-1/2	2	24	SBDFI11412

Ultimate strength need to be divided by safety factors:

- 2:1 for temporary fixture
- 3:1 for permanent fixing
- 4:1 for lifting

Ultimate strength based on 3,500 psi concrete.

For connecting, the bolt or rod connection must be equal to a Grade 8 or A325.

If edge distance is below the above published values please contact SureBuilt engineer.

Minimum bolt penetration for full load transfer is minimum 1.5 x bolt diameter.

Rebar connection meets minimum 125% of specified yield requirements.

Standard TSP nail plug available.

